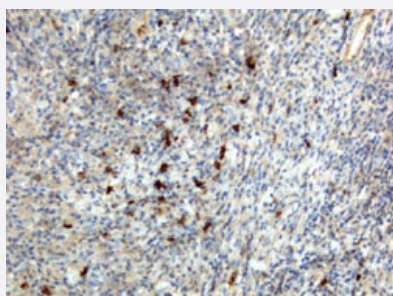


RecomAb™

Human IgA monoclonal antibody, clone RM128 (Biotin)

Catalog # MAB14951 Size 50 ug

Applications



Immunohistochemistry (Formalin/PFA-fixed paraffin-embedded sections)

Immunohistochemical staining (Formalin-fixed paraffin-embedded sections) of human lymphoid tissue with Human IgA monoclonal antibody, clone RM128 (Biotin) (Cat # MAB14951).

Enzyme-linked Immunoabsorbent Assay

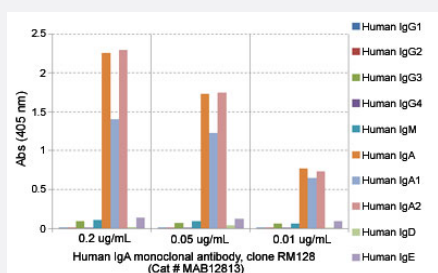
Sandwich ELISA using Human IgA monoclonal antibody, clone RM128 (Biotin) (Cat# MAB14951) as the capture antibody (100ng/well), and Human Ig light chain monoclonal antibody, clone RM129 (Biotin) (Cat# MAB12811) as the detection antibody, followed by an alkaline phosphatase conjugated streptavidin.

Enzyme-linked Immunoabsorbent Assay

ELISA analysis of Human IgA monoclonal antibody, clone RM128 (Cat # MAB12813) at the following concentrations: 0.2 ug/mL, 0.05 ug/mL, 0.01 ug/mL. The plate was coated with 50 ng/well of different immunoglobulins and the result shows this antibody reacts to both human IgA1 and IgA2; no cross reactivity human IgG, IgM, IgD, or IgE. An alkaline phosphatase conjugated anti-rabbit IgG as the secondary antibody.

Enzyme-linked Immunoabsorbent Assay

A titer ELISA using Human IgA monoclonal antibody, clone RM128 (Biotin) (Cat# MAB14951). The plate was coated with different amounts of human IgA. A serial dilution of Cat# MAB14951 was used as the primary antibody. An alkaline phosphatase conjugated anti-rabbit IgG as the secondary antibody.



Enzyme-linked Immunoabsorbent Assay

Sandwich ELISA using Human IgA monoclonal antibody, clone RM128 (Biotin) (Cat# MAB14951) as the capture antibody (100ng/well), and Human Ig light chain monoclonal antibody, clone RM129 (Biotin) (Cat# MAB12811) as the detection antibody, followed by an alkaline phosphatase conjugated streptavidin.

Specification

Product Description	Rabbit recombinant monoclonal antibody raised against human IgA.
Antibody Species	Rabbit
Immunogen	Original antibody is raised against human IgA.
Sequence	N/A
Reactivity	Human
Form	Liquid
Conjugation	Biotin
Purification	Protein A purification
Isotype	IgG
Recommend Usage	ELISA (0.05-0.2 ug/well for capture, 0.05-0.2 ug/mL for detection) Flow Cytometry Immunocytochemistry (0.5-2 ug/mL) Immunohistochemistry (Formalin/PFA-fixed paraffin-embedded sections) (0.1-1 ug/mL) The optimal working dilution should be determined by the end user.
Storage Buffer	In PBS (50% glycerol, 1% BSA, 0.09% sodium azide)
Storage Instruction	Store at -20°C. Aliquot to avoid repeated freezing and thawing.
Note	This product contains sodium azide: a POISONOUS AND HAZARDOUS SUBSTANCE which should be handled by trained staff only.

Applications

- Immunohistochemistry (Formalin/PFA-fixed paraffin-embedded sections)

Immunohistochemical staining (Formalin-fixed paraffin-embedded sections) of human lymphoid tissue with Human IgA monoclonal antibody, clone RM128 (Biotin) (Cat # MAB14951).

- Immunocytochemistry

- Enzyme-linked Immunoabsorbent Assay

Sandwich ELISA using Human IgA monoclonal antibody, clone RM128 (Biotin) (Cat# MAB14951) as the capture antibody (100ng/well), and Human Ig light chain monoclonal antibody, clone RM129 (Biotin) (Cat# MAB12811) as the detection antibody, followed by an alkaline phosphatase conjugated streptavidin.

- Enzyme-linked Immunoabsorbent Assay

ELISA analysis of Human IgA monoclonal antibody, clone RM128 (Cat # MAB12813) at the following concentrations: 0.2 ug/mL, 0.05 ug/mL, 0.01 ug/mL. The plate was coated with 50 ng/well of different immunoglobulins and the result shows this antibody reacts to both human IgA1 and IgA2; no cross reactivity human IgG, IgM, IgD, or IgE. An alkaline phosphatase conjugated anti-rabbit IgG as the secondary antibody.

- Enzyme-linked Immunoabsorbent Assay

A titer ELISA using Human IgA monoclonal antibody, clone RM128 (Biotin) (Cat# MAB14951). The plate was coated with different amounts of human IgA. A serial dilution of Cat# MAB14951 was used as the primary antibody. An alkaline phosphatase conjugated anti-rabbit IgG as the secondary antibody.

- Enzyme-linked Immunoabsorbent Assay

Sandwich ELISA using Human IgA monoclonal antibody, clone RM128 (Biotin) (Cat# MAB14951) as the capture antibody (100ng/well), and Human Ig light chain monoclonal antibody, clone RM129 (Biotin) (Cat# MAB12811) as the detection antibody, followed by an alkaline phosphatase conjugated streptavidin.

- Flow Cytometry

Gene Info — IGHA1

Entrez GeneID	3493
Protein Accession#	P01876;P01877
Gene Name	IGHA1
Gene Alias	FLJ14473, FLJ35065, FLJ35500, FLJ36402, FLJ39698, FLJ40001, FLJ41548, FLJ41552, FLJ41789, FLJ43248, FLJ43594, FLJ44293, FLJ46028, FLJ46621, FLJ46724, FLJ46811, FLJ46824, IgA1, MGC102857
Gene Description	immunoglobulin heavy constant alpha 1
Omim ID	146900

Gene Ontology	Hyperlink
---------------	---------------------------

Other Designations	-
--------------------	---

Gene Info — IGHA2

Entrez GeneID	3494
---------------	----------------------

Protein Accession#	P01876;P01877
--------------------	-------------------------------

Gene Name	IGHA2
-----------	-------

Gene Alias	-
------------	---

Gene Description	immunoglobulin heavy constant alpha 2 (A2m marker)
------------------	--

Omim ID	147000
---------	------------------------

Gene Ontology	Hyperlink
---------------	---------------------------

Other Designations	-
--------------------	---

Disease

- [IgA Deficiency](#)