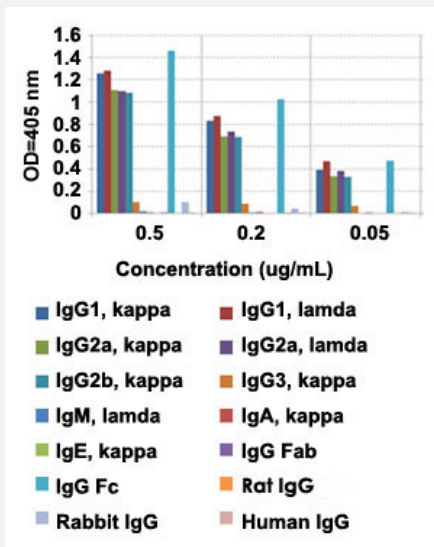


RecomAb™

Mouse IgG Fc monoclonal antibody, clone RMG06 (Biotin)

Catalog # MAB14946 Size 50 ug

Applications



Enzyme-linked Immunoabsorbent Assay

ELISA analysis of Mouse IgG Fc monoclonal antibody, clone RMG06 (Cat # MAB12776) at the following concentrations: 0.5 ug/mL, 0.2 ug/mL, and 0.05 ug/mL. The plate was coated with 50 ng/well of different immunoglobulins and the result shows this antibody reacts to the Fc region of mouse IgG1, IgG2a, IgG2b, and very slightly to IgG3; no cross reactivity with IgM, IgA, IgE, human IgG, rat IgG, and rabbit IgG. An alkaline phosphatase conjugated anti-goat IgG as the secondary antibody.

Enzyme-linked Immunoabsorbent Assay

A titer ELISA of mouse IgG. The plate was coated with different amounts of mouse IgG. A serial dilution of Mouse IgG Fc monoclonal antibody, clone RMG06 (Biotin) (Cat# MAB14946) was used as the primary antibody. An alkaline phosphatase conjugated anti-goat IgG as the secondary antibody.

Specification

Product Description	Goat recombinant monoclonal antibody raised against mouse IgG Fc.
Antibody Species	Goat
Immunogen	Original antibody is raised against mouse IgG.

Sequence	N/A
Reactivity	Mouse
Form	Liquid
Conjugation	Biotin
Purification	Protein G purification
Isotype	IgG
Recommend Usage	ELISA (0.05-1 ug/mL) Flow Cytometry Immunocytochemistry Immunohistochemistry (0.5-2 ug/mL) Immunoprecipitation The optimal working dilution should be determined by the end user.
Storage Buffer	In PBS (50% glycerol, 1% BSA, 0.09% sodium azide)
Storage Instruction	Store at -20°C. Aliquot to avoid repeated freezing and thawing.
Note	This product contains sodium azide: a POISONOUS AND HAZARDOUS SUBSTANCE which should be handled by trained staff only.

Applications

- Immunohistochemistry
- Immunocytochemistry
- Immunoprecipitation

- Enzyme-linked Immunoabsorbent Assay

ELISA analysis of Mouse IgG Fc monoclonal antibody, clone RMG06 (Cat # MAB12776) at the following concentrations: 0.5 ug/mL, 0.2 ug/mL, and 0.05 ug/mL. The plate was coated with 50 ng/well of different immunoglobulins and the result shows this antibody reacts to the Fc region of mouse IgG1, IgG2a, IgG2b, and very slightly to IgG3; no cross reactivity with IgM, IgA, IgE, human IgG, rat IgG, and rabbit IgG. An alkaline phosphatase conjugated anti-goat IgG as the secondary antibody.

- Enzyme-linked Immunoabsorbent Assay

A titer ELISA of mouse IgG. The plate was coated with different amounts of mouse IgG. A serial dilution of Mouse IgG Fc monoclonal antibody, clone RMG06 (Biotin) (Cat# MAB14946) was used as the primary antibody. An alkaline phosphatase conjugated anti-goat IgG as the secondary antibody.

- Flow Cytometry