

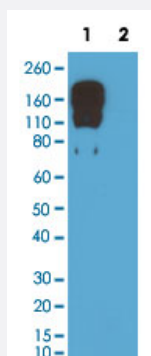
RecomAb™

## Mouse IgG2c monoclonal antibody, clone RM223 (Biotin)

Catalog # MAB14942

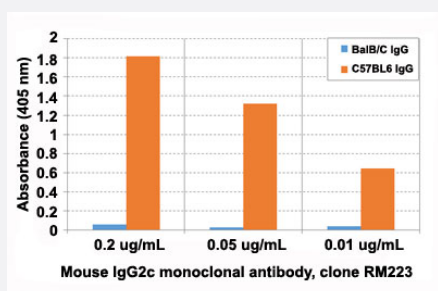
Size 50 ug

### Applications



#### Western Blot

Western blot analysis of Lane 1: nonreduced (-) and Lane 2: reduced (+) mouse IgG2c with Mouse IgG2c monoclonal antibody, clone RM223 (Biotin) (Cat # MAB14942) at 0.5 ug/mL working concentration. This antibody reacts to nonreduced IgG2c.



#### Enzyme-linked Immunoabsorbent Assay

ELISA analysis of Mouse IgG2c monoclonal antibody, clone RM223 (Cat # MAB15161) at the following concentrations: 0.2 ug/mL, 0.05 ug/mL, and 0.01 ug/mL. The result shows this antibody reacts to C57BL6 IgG containing IgG2c, and does not react to BalB/C IgG containing IgG2a. An alkaline phosphatase conjugated anti-rabbit IgG as the secondary antibody.

#### Enzyme-linked Immunoabsorbent Assay

A titer ELISA of mouse IgG2c. The plate was coated with different amounts of mouse IgG2c. A serial dilution of Mouse IgG2c monoclonal antibody, clone RM223 (Biotin) (Cat# MAB14942) was used as the primary antibody. An alkaline phosphatase conjugated anti-rabbit IgG as the secondary antibody.

### Specification

#### Product Description

Rabbit recombinant monoclonal antibody raised against mouse IgG2c.

Antibody Species	Rabbit
Immunogen	Original antibody is raised against mouse IgG2c.
Sequence	N/A
Reactivity	Mouse
Form	Liquid
Conjugation	Biotin
Purification	Protein A purification
Isotype	IgG
Recommend Usage	ELISA (0.01-0.2 ug/mL) Flow Cytometry Immunocytochemistry (0.5-2 ug/mL) Immunohistochemistry (0.5-2 ug/mL) Immunoprecipitation Western Blotting (0.5-2 ug/mL) The optimal working dilution should be determined by the end user.
Storage Buffer	In PBS (50% glycerol, 1% BSA, 0.09% sodium azide)
Storage Instruction	Store at -20°C. Aliquot to avoid repeated freezing and thawing.
Note	This product contains sodium azide: a POISONOUS AND HAZARDOUS SUBSTANCE which should be handled by trained staff only.

## Applications

- Western Blot

Western blot analysis of Lane 1: nonreduced (-) and Lane 2: reduced (+) mouse IgG2c with Mouse IgG2c monoclonal antibody, clone RM223 (Biotin) (Cat # MAB14942) at 0.5 ug/mL working concentration. This antibody reacts to nonreduced IgG2c.

- Immunohistochemistry

- Immunocytochemistry

- Immunoprecipitation

- Enzyme-linked Immunoabsorbent Assay

ELISA analysis of Mouse IgG2c monoclonal antibody, clone RM223 (Cat # MAB15161) at the following concentrations: 0.2 ug/mL, 0.05 ug/mL, and 0.01 ug/mL. The result shows this antibody reacts to C57BL6 IgG containing IgG2c, and does not react to BalB/C IgG containing IgG2a. An alkaline phosphatase conjugated anti-rabbit IgG as the secondary antibody.

- Enzyme-linked Immunoabsorbent Assay

A titer ELISA of mouse IgG2c. The plate was coated with different amounts of mouse IgG2c. A serial dilution of Mouse IgG2c monoclonal antibody, clone RM223 (Biotin) (Cat# MAB14942) was used as the primary antibody. An alkaline phosphatase conjugated anti-rabbit IgG as the secondary antibody.

- Flow Cytometry

## Gene Info — Igh-1b

Entrez GeneID	<a href="#">404711</a>
---------------	------------------------

Protein Accession#	<a href="#">F6TQW2</a>
--------------------	------------------------

Gene Name	Igh-1b
-----------	--------

Gene Alias	IGHG2C
------------	--------

Gene Description	immunoglobulin heavy chain 1b (serum IgG2c)
------------------	---

Gene Ontology	<a href="#">Hyperlink</a>
---------------	---------------------------

Other Designations	-
--------------------	---