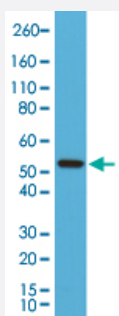


RecomAb™

# CCNB1 monoclonal antibody, clone RM281

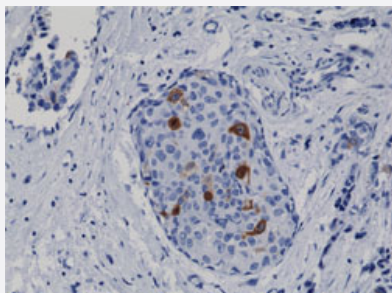
Catalog # MAB14928      Size 100 uL

## Applications



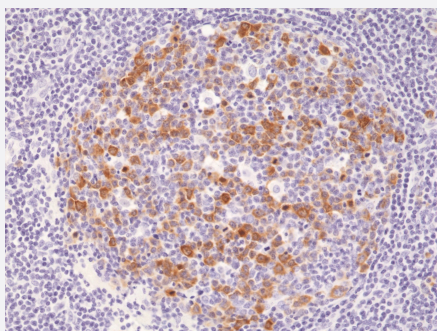
### Western Blot (Cell lysate)

Western Blot analysis of Jurkat cell lysate with CCNB1 monoclonal antibody, clone RM281 (Cat # MAB14928).



### Immunohistochemistry (Formalin/PFA-fixed paraffin-embedded sections)

Immunohistochemical staining (Formalin-fixed paraffin-embedded sections) of human breast cancer with CCNB1 monoclonal antibody, clone RM281 (Cat # MAB14928).



### Immunohistochemistry

Immunohistochemical staining of formalin fixed and paraffin embedded human tonsil tissue sections using CCNB1 monoclonal antibody, clone RM281 (Cat# MAB14928)1 at a 1:1000 dilution.

## Specification

### Product Description

Rabbit recombinant monoclonal antibody raised against of human CCNB1.

Antibody Species	Rabbit
Immunogen	Original antibody is raised against a synthetic peptide corresponding to human CCNB1.
Sequence	N/A
Reactivity	Human
Form	Liquid
Purification	Protein A purification
Isotype	IgG
Recommend Usage	Immunohistochemistry (Formalin/PFA-fixed paraffin-embedded sections) (1:1000-1:2000) Western Blotting (1:1000-1:2000) The optimal working dilution should be determined by the end user.
Storage Buffer	In PBS (50% glycerol, 1% BSA, 0.09% sodium azide)
Storage Instruction	Store at -20°C. Aliquot to avoid repeated freezing and thawing.
Note	This product contains sodium azide: a POISONOUS AND HAZARDOUS SUBSTANCE which should be handled by trained staff only.

## Applications

- Western Blot (Cell lysate)

Western Blot analysis of Jurkat cell lysate with CCNB1 monoclonal antibody, clone RM281 (Cat # MAB14928).

- Immunohistochemistry (Formalin/PFA-fixed paraffin-embedded sections)

Immunohistochemical staining (Formalin-fixed paraffin-embedded sections) of human breast cancer with CCNB1 monoclonal antibody, clone RM281 (Cat # MAB14928).

- Immunohistochemistry

Immunohistochemical staining of formalin fixed and paraffin embedded human tonsil tissue sections using CCNB1 monoclonal antibody, clone RM281 (Cat# MAB14928)1 at a 1:1000 dilution.

## Gene Info — CCNB1

Entrez GeneID [891](#)

Protein Accession# [P14635](#)

Gene Name	CCNB1
Gene Alias	CCNB
Gene Description	cyclin B1
Omim ID	<a href="#">123836</a>
Gene Ontology	<a href="#">Hyperlink</a>
Gene Summary	<p>The protein encoded by this gene is a regulatory protein involved in mitosis. The gene product complexes with p34(cdc2) to form the maturation-promoting factor (MPF). Two alternative transcripts have been found, a constitutively expressed transcript and a cell cycle-regulated transcript, that is expressed predominantly during G2/M phase. The different transcripts result from the use of alternate transcription initiation sites. [provided by RefSeq]</p>
Other Designations	G2/mitotic-specific cyclin B1

## Pathway

- [Cell cycle](#)
- [p53 signaling pathway](#)

## Disease

- [Adenocarcinoma](#)
- [Esophageal Neoplasms](#)
- [Genetic Predisposition to Disease](#)
- [Ovarian Neoplasms](#)