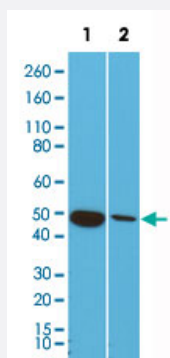


RecomAb™

KRT18 monoclonal antibody, clone RM279

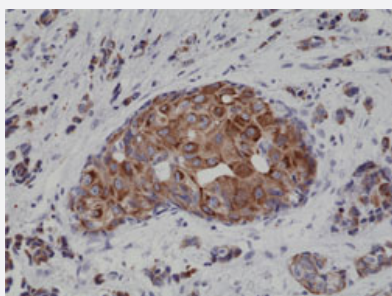
Catalog # MAB14926 Size 100 uL

Applications



Western Blot (Cell lysate)

Western Blot analysis of Lane 1: MCF-7 and Lane 2: HeLa cell lysates with KRT18 monoclonal antibody, clone RM279 (Cat # MAB14926).



Immunohistochemistry (Formalin/PFA-fixed paraffin-embedded sections)

Immunohistochemical staining (Formalin-fixed paraffin-embedded sections) of human breast cancer with KRT18 monoclonal antibody, clone RM279 (Cat # MAB14926).

Specification

Product Description	Rabbit recombinant monoclonal antibody raised against of human KRT18.
Antibody Species	Rabbit
Immunogen	Original antibody is raised against a synthetic peptide corresponding to N-terminus of human KRT18.
Sequence	N/A
Reactivity	Human

Form	Liquid
Purification	Protein A purification
Isotype	IgG
Recommend Usage	Immunohistochemistry (Formalin/PFA-fixed paraffin-embedded sections) (1:1000-1:4000) Western Blotting (1:1000-1:2000) The optimal working dilution should be determined by the end user.
Storage Buffer	In PBS (50% glycerol, 1% BSA, 0.09% sodium azide)
Storage Instruction	Store at -20°C. Aliquot to avoid repeated freezing and thawing.
Note	This product contains sodium azide: a POISONOUS AND HAZARDOUS SUBSTANCE which should be handled by trained staff only.

Applications

- Western Blot (Cell lysate)

Western Blot analysis of Lane 1: MCF-7 and Lane 2: HeLa cell lysates with KRT18 monoclonal antibody, clone RM279 (Cat # MAB14926).

- Immunohistochemistry (Formalin/PFA-fixed paraffin-embedded sections)

Immunohistochemical staining (Formalin-fixed paraffin-embedded sections) of human breast cancer with KRT18 monoclonal antibody, clone RM279 (Cat # MAB14926).

Gene Info — KRT18

Entrez GeneID	3875
Protein Accession#	P05783
Gene Name	KRT18
Gene Alias	CYK18, K18
Gene Description	keratin 18
Omim ID	148070 215600
Gene Ontology	Hyperlink

Gene Summary

KRT18 encodes the type I intermediate filament chain keratin 18. Keratin 18, together with its filament partner keratin 8, are perhaps the most commonly found members of the intermediate filament gene family. They are expressed in single layer epithelial tissues of the body. Mutations in this gene have been linked to cryptogenic cirrhosis. Two transcript variants encoding the same protein have been found for this gene. [provided by RefSeq]

Other Designations

cell proliferation-inducing protein 46|cytokeratin 18

Pathway

- [Pathogenic Escherichia coli infection - EHEC](#)

Disease

- [Cleft Lip](#)
- [Cleft Palate](#)
- [Drug-Induced Liver Injury](#)
- [Genetic Predisposition to Disease](#)
- [Liver Cirrhosis](#)
- [Liver Failure](#)