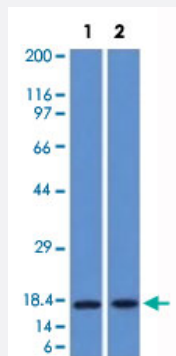


PIP monoclonal antibody, clone PIP/1571

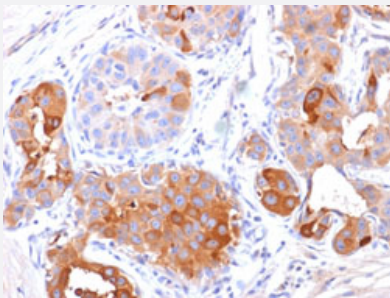
Catalog # MAB14869 Size 100 ug

Applications



Western Blot

Western Blot analysis of Lane 1: human pancreas and Lane 2: HepG2 lysates with PIP monoclonal antibody, clone PIP/1571 (Cat # MAB14869).



Immunohistochemistry (Formalin/PFA-fixed paraffin-embedded sections)

Immunohistochemical staining (Formalin-fixed paraffin-embedded sections) of human breast carcinoma with PIP monoclonal antibody, clone PIP/1571 (Cat # MAB14869).

Specification

Product Description	Mouse monoclonal antibody raised against partial recombinant human PIP.
Immunogen	Recombinant protein corresponding to amino acids 41-146 of human PIP.
Host	Mouse
Theoretical MW (kDa)	15
Reactivity	Human
Form	Liquid

Purification	Protein A/G purification
Isotype	IgG2a, kappa
Recommend Usage	Flow Cytometry (0.5-1 ug/10 ⁶ cells) Immunofluorescence (0.5-1 ug/mL) Immunohistochemistry (Formalin/PFA-fixed paraffin-embedded sections) (0.5-1 ug/mL) Western Blotting (0.5-1 ug/mL) The optimal working dilution should be determined by the end user.
Storage Buffer	In 10 mM PBS (0.05% BSA, 0.05% sodium azide).
Storage Instruction	Store at 4°C.
Note	This product contains sodium azide: a POISONOUS AND HAZARDOUS SUBSTANCE which should be handled by trained staff only.

Applications

- Western Blot

Western Blot analysis of Lane 1: human pancreas and Lane 2: HepG2 lysates with PIP monoclonal antibody, clone PIP/1571 (Cat # MAB14869).

- Immunohistochemistry (Formalin/PFA-fixed paraffin-embedded sections)

Immunohistochemical staining (Formalin-fixed paraffin-embedded sections) of human breast carcinoma with PIP monoclonal antibody, clone PIP/1571 (Cat # MAB14869).

- Immunofluorescence

- Flow Cytometry

Gene Info — PIP

Entrez GeneID	5304
Protein Accession#	P12273
Gene Name	PIP
Gene Alias	GCDFP-15, GCDFP15, GPIP4
Gene Description	prolactin-induced protein
Omim ID	176720

Gene Ontology

[Hyperlink](#)

Other Designations

prolactin-inducible protein

Publication Reference

- [Gross cystic disease fluid protein-15 as a marker for breast cancer: immunohistochemical analysis of 690 human neoplasms and comparison with alpha-lactalbumin.](#)

Wick MR, Lillemoe TJ, Copland GT, Swanson PE, Manivel JC, Kiang DT.

Human Pathology 1989 Mar; 20(3):281.

Application: IHC-P, Human, Human breast cancers, Human nonmammary malignancies

Disease

- [Genetic Predisposition to Disease](#)
- [Rhinitis](#)