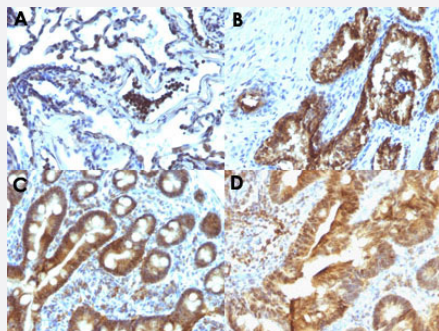


TTRAP monoclonal antibody, clone TDP2/1258

Catalog # MAB14862 Size 100 ug

Applications



Immunohistochemistry (Formalin/PFA-fixed paraffin-embedded sections)

Immunohistochemical staining (Formalin-fixed paraffin-embedded sections) of human lung carcinoma (A), human prostate carcinoma (B), human duodenal carcinoma (C) and human colon carcinoma (D) with TTRAP monoclonal antibody, clone TDP2/1258 (Cat # MAB14862).

Specification

| | |
|-----------------------------|---|
| Product Description | Mouse monoclonal antibody raised against full length recombinant human TTRAP. |
| Immunogen | Recombinant protein corresponding to full length human TTRAP. |
| Host | Mouse |
| Theoretical MW (kDa) | 41 |
| Reactivity | Human |
| Form | Liquid |
| Purification | Protein A/G purification |
| Isotype | IgG2b, kappa |
| Recommend Usage | Flow Cytometry (0.5-1 ug/10 ⁶ cells) Immunofluorescence (0.5-1 ug/mL) Immunohistochemistry (Formalin/PFA-fixed paraffin-embedded sections) (0.5-1 ug/mL) The optimal working dilution should be determined by the end user. |
| Storage Buffer | In 10 mM PBS. |

Storage Instruction

Store at -20 to -80°C.
Aliquot to avoid repeated freezing and thawing.

Applications

- Immunohistochemistry (Formalin/PFA-fixed paraffin-embedded sections)

Immunohistochemical staining (Formalin-fixed paraffin-embedded sections) of human lung carcinoma (A), human prostate carcinoma (B), human duodenal carcinoma (C) and human colon carcinoma (D) with TTRAP monoclonal antibody, clone TDP2/1258 (Cat # MAB14862).

- Immunofluorescence

- Flow Cytometry

Gene Info — TTRAP

Entrez GeneID [51567](#)

Protein Accession# [O95551](#)

Gene Name TTRAP

Gene Alias AD022, EAP2, MGC111021, MGC9099, dJ30M3.3

Gene Description TRAF and TNF receptor associated protein

Omim ID [605764](#)

Gene Ontology [Hyperlink](#)

Gene Summary This gene encodes a member of a superfamily of divalent cation-dependent phosphodiesterases. The encoded protein associates with CD40, tumor necrosis factor (TNF) receptor-75 and TNF receptor associated factors (TRAFs), and inhibits nuclear factor-kappa-B activation. This protein has sequence and structural similarities with APE1 endonuclease, which is involved in both DNA repair and the activation of transcription factors. [provided by RefSeq]

Other Designations ETS1-associated protein 2|OTTHUMP00000016091|OTTHUMP00000039397|TRAF and TNF receptor-associated protein

Publication Reference

- [EAPII interacts with ETS1 and modulates its transcriptional function.](#)

Pei H, Yordy JS, Leng Q, Zhao Q, Watson DK, Li R.

Oncogene 2003 May; 22(18):2699.

Application: IF, IP, WB-Tr, Human, Monkey, COS-1, DU 145, Jurkat, SK-HEP-1 cells

Disease

- [Genetic Predisposition to Disease](#)
- [Narcolepsy](#)
- [Polyradiculoneuropathy](#)