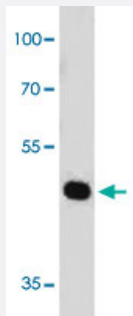


PAX7 monoclonal antibody, clone PAX7/497

Catalog # MAB14860 Size 100 ug

Applications



Western Blot (Cell lysate)

Western Blot analysis of HeLa cell lysate with PAX7 monoclonal antibody, clone PAX7/497 (Cat # MAB14860).

Specification

Product Description Mouse monoclonal antibody raised against partial recombinant human PAX7.

Immunogen Recombinant protein corresponding to amino acids 301-505 of human PAX7.

Host Mouse

Theoretical MW (kDa) 57

Reactivity Human

Form Liquid

Purification Protein A/G purification

Isotype IgG1, kappa

Recommend Usage
 Flow Cytometry (0.5-1 ug/10⁶ cells)
 Immunofluorescence (0.5-1 ug/mL)
 Western Blotting (0.5-1 ug/mL)
 The optimal working dilution should be determined by the end user.

Storage Buffer In 10 mM PBS.

Storage Instruction

Store at -20 to -80°C.
Aliquot to avoid repeated freezing and thawing.

Applications

- Western Blot (Cell lysate)

Western Blot analysis of HeLa cell lysate with PAX7 monoclonal antibody, clone PAX7/497 (Cat # MAB14860).

- Immunofluorescence

- Flow Cytometry

Gene Info — PAX7

Entrez GeneID [5081](#)

Protein Accession# [P23759](#)

Gene Name PAX7

Gene Alias HUP1, PAX7B

Gene Description paired box 7

Omim ID [167410 268220](#)

Gene Ontology [Hyperlink](#)

Gene Summary

This gene is a member of the paired box (PAX) family of transcription factors. Members of this gene family typically contain a paired box domain, an octapeptide, and a paired-type homeodomain. These genes play critical roles during fetal development and cancer growth. The specific function of the paired box 7 gene is unknown but speculated to involve tumor suppression since fusion of this gene with a forkhead domain family member has been associated with alveolar rhabdomyosarcoma. Three transcript variants encoding different isoforms have been found for this gene. [provided by RefSeq]

Other Designations

OTTHUMP00000002534|PAX7 transcriptional factor|paired box gene 7|paired box homeotic gene 7|paired domain gene 7

Disease

- [Cleft Lip](#)

- [Cleft Palate](#)
- [Genetic Predisposition to Disease](#)
- [Narcolepsy](#)