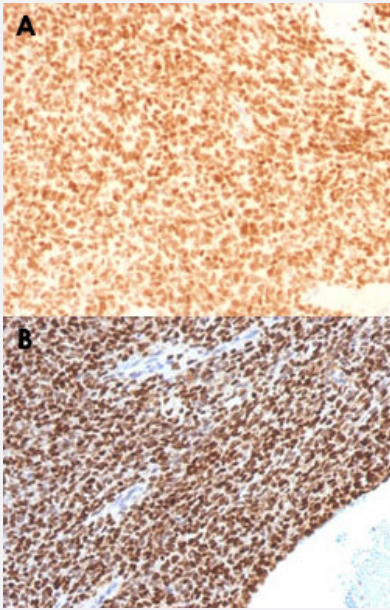


NKX2-2 monoclonal antibody, clone NX2/1524

Catalog # MAB14856 Size 100 ug

Applications



Immunohistochemistry (Formalin/PFA-fixed paraffin-embedded sections)

Immunohistochemical staining (Formalin-fixed paraffin-embedded sections) of human Ewing's sarcoma (A, B) with NKX2-2 monoclonal antibody, clone NX2/1524 (Cat # MAB14856).

Specification

| | |
|-----------------------------|--|
| Product Description | Mouse monoclonal antibody raised against partial recombinant human NKX2-2. |
| Immunogen | Recombinant protein corresponding to amino acids 1-119 of human NKX2-2. |
| Host | Mouse |
| Theoretical MW (kDa) | 40-50 |
| Reactivity | Human |
| Form | Liquid |
| Purification | Protein A/G purification |
| Isotype | IgG1, kappa |

Recommend Usage

Flow Cytometry (0.5-1 ug/10⁶ cells)
Immunofluorescence (1-2 ug/mL)
Immunohistochemistry (Formalin/PFA-fixed paraffin-embedded sections) (1-2 ug/mL)
The optimal working dilution should be determined by the end user.

Storage Buffer

In 10 mM PBS.

Storage Instruction

Store at -20 to -80°C.
Aliquot to avoid repeated freezing and thawing.

Applications

- Immunohistochemistry (Formalin/PFA-fixed paraffin-embedded sections)

Immunohistochemical staining (Formalin-fixed paraffin-embedded sections) of human Ewing's sarcoma (A, B) with NKX2-2 monoclonal antibody, clone NX2/1524 (Cat # MAB14856).

- Immunofluorescence

- Flow Cytometry

Gene Info — NKX2-2

Entrez GeneID

[4821](#)

Protein Accession#

[O95096](#)

Gene Name

NKX2-2

Gene Alias

NKX2.2, NKX2B

Gene Description

NK2 homeobox 2

Omim ID

[604612](#)

Gene Ontology

[Hyperlink](#)

Gene Summary

The protein encoded by this gene contains a homeobox domain and may be involved in the morphogenesis of the central nervous system. This gene is found on chromosome 20 near NKX2-4, and these two genes appear to be duplicated on chromosome 14 in the form of TITF1 and NKX2-8. The encoded protein is likely to be a nuclear transcription factor. [provided by RefSeq]

Other Designations

NK-2 homolog B|NK2 transcription factor related, locus 2|NK2 transcription factor-like protein B|O TTHUMP00000030405|homeobox protein NK-2 homolog B

Publication Reference

- [NKX2.2 Is a Useful Immunohistochemical Marker for Ewing Sarcoma.](#)

Yoshida A, Sekine S, Tsuta K, Fukayama M, Furuta K, Tsuda H.

The American Journal of Surgical Pathology 2012 Jul; 36(7):993.

- [Homeodomain transcription factor NKX2.2 functions in immature cells to control enteroendocrine differentiation and is expressed in gastrointestinal neuroendocrine tumors.](#)

Wang YC, Gallego-Arteche E, Iezza G, Yuan X, Matli MR, Choo SP, Zuraek MB, Gogia R, Lynn FC, German MS, Bergsland EK, Donner DB, Warren RS, Nakakura EK.

Endocrine-Related Cancer 2009 Mar; 16(1):267.

Pathway

- [Maturity onset diabetes of the young](#)

Disease

- [Diabetes Mellitus](#)