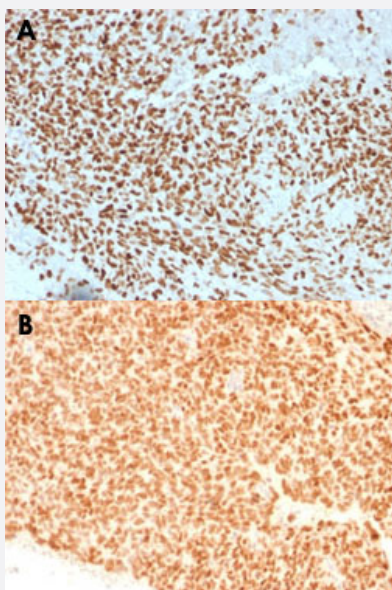


NKX2-2 monoclonal antibody, clone NX2/1523

Catalog # MAB14853 Size 100 ug

Applications



Immunohistochemistry (Formalin/PFA-fixed paraffin-embedded sections)

Immunohistochemical staining (Formalin-fixed paraffin-embedded sections) of human Ewing's sarcoma (A, B) with NKX2-2 monoclonal antibody, clone NX2/1523 (Cat # MAB14853).

Specification

Product Description	Mouse monoclonal antibody raised against partial recombinant human NKX2-2.
Immunogen	Recombinant protein corresponding to amino acids 1-119 of human NKX2-2.
Host	Mouse
Theoretical MW (kDa)	40-50
Reactivity	Human
Form	Liquid
Purification	Protein A/G purification
Isotype	IgG1, kappa

Recommend Usage	Flow Cytometry (0.5-1 ug/10 ⁶ cells) Immunofluorescence (1-2 ug/mL) Immunohistochemistry (Formalin/PFA-fixed paraffin-embedded sections) (1-2 ug/mL) The optimal working dilution should be determined by the end user.
Storage Buffer	In 10 mM PBS (0.05% BSA, 0.05% sodium azide).
Storage Instruction	Store at 4°C.
Note	This product contains sodium azide: a POISONOUS AND HAZARDOUS SUBSTANCE which should be handled by trained staff only.

Applications

- Immunohistochemistry (Formalin/PFA-fixed paraffin-embedded sections)

Immunohistochemical staining (Formalin-fixed paraffin-embedded sections) of human Ewing's sarcoma (A, B) with NKX2-2 monoclonal antibody, clone NX2/1523 (Cat # MAB14853).

- Immunofluorescence

- Flow Cytometry

Gene Info — NKX2-2

Entrez GeneID	4821
Protein Accession#	O95096
Gene Name	NKX2-2
Gene Alias	NKX2.2, NKX2B
Gene Description	NK2 homeobox 2
Omim ID	604612
Gene Ontology	Hyperlink
Gene Summary	The protein encoded by this gene contains a homeobox domain and may be involved in the morphogenesis of the central nervous system. This gene is found on chromosome 20 near NKX2-4, and these two genes appear to be duplicated on chromosome 14 in the form of TITF1 and NKX2-8. The encoded protein is likely to be a nuclear transcription factor. [provided by RefSeq]
Other Designations	NK-2 homolog B NK2 transcription factor related, locus 2 NK2 transcription factor-like protein B OTTHUMP00000030405 homeobox protein NK-2 homolog B

Publication Reference

- [NKX2.2 Is a Useful Immunohistochemical Marker for Ewing Sarcoma.](#)

Yoshida A, Sekine S, Tsuta K, Fukayama M, Furuta K, Tsuda H.

The American Journal of Surgical Pathology 2012 Jul; 36(7):993.

- [Homeodomain transcription factor NKX2.2 functions in immature cells to control enteroendocrine differentiation and is expressed in gastrointestinal neuroendocrine tumors.](#)

Wang YC, Gallego-Arteche E, Iezza G, Yuan X, Matli MR, Choo SP, Zuraek MB, Gogia R, Lynn FC, German MS, Bergsland EK, Donner DB, Warren RS, Nakakura EK.

Endocrine-Related Cancer 2009 Mar; 16(1):267.

Pathway

- [Maturity onset diabetes of the young](#)

Disease

- [Diabetes Mellitus](#)