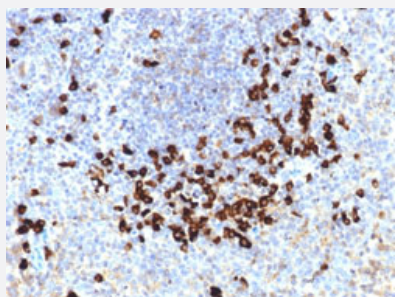


# Lambda Light Chain monoclonal antibody, clone LLC/1738

Catalog # MAB14822      Size 100 ug

## Applications



### Immunohistochemistry (Formalin/PFA-fixed paraffin-embedded sections)

Immunohistochemical staining (Formalin-fixed paraffin-embedded sections) of human tonsil with Lambda Light Chain monoclonal antibody, clone LLC/1738 (Cat # MAB14822).

## Specification

<b>Product Description</b>	Mouse monoclonal antibody raised against native human Lambda Light Chain.
<b>Immunogen</b>	Native purified human Lambda Light Chain.
<b>Host</b>	Mouse
<b>Theoretical MW (kDa)</b>	~22.5
<b>Reactivity</b>	Human
<b>Form</b>	Liquid
<b>Purification</b>	Protein A/G purification
<b>Isotype</b>	IgG1, kappa
<b>Recommend Usage</b>	Flow Cytometry (0.5-1 ug/10 <sup>6</sup> cells in 0.1 mL) Immunofluorescence (1-2 ug/mL) Immunohistochemistry (Formalin/PFA-fixed paraffin-embedded sections) (0.5-1 ug/mL) Western Blotting (0.5-1 ug/mL) The optimal working dilution should be determined by the end user.
<b>Storage Buffer</b>	In 10 mM PBS.

**Storage Instruction**

Store at -20 to -80°C.  
Aliquot to avoid repeated freezing and thawing.

## Applications

- Western Blot
- Immunohistochemistry (Formalin/PFA-fixed paraffin-embedded sections)

Immunohistochemical staining (Formalin-fixed paraffin-embedded sections) of human tonsil with Lambda Light Chain monoclonal antibody, clone LLC/1738 (Cat # MAB14822).

- Immunofluorescence
- Flow Cytometry

## Gene Info — IGLC1

Entrez GeneID	<a href="#">3537</a>
Protein Accession#	<a href="#">P0CG04</a>
Gene Name	IGLC1
Gene Alias	IGLC
Gene Description	immunoglobulin lambda constant 1 (Mcg marker)
Omim ID	<a href="#">147220</a>
Gene Ontology	<a href="#">Hyperlink</a>
Other Designations	-

## Publication Reference

- [The spectrum of monoclonal gammopathies affecting the kidney.](#)

Leung N, Gertz MA.

Leukemia & Lymphoma 2012 Sep; 53(9):1656.

- [Kidney light chain disease in patients with the acquired immunodeficiency syndrome.](#)

Villaverde RV, Darioli V, Hirschel B, McKee TA, Lobrinus JA, Moll S.

Clinical Kidney Journal 2012 Feb; 5(1):59.