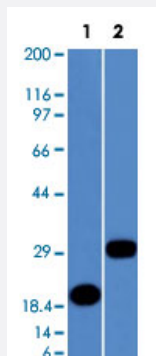


ELA3B monoclonal antibody, clone CELA3B/1811

Catalog # MAB14787

Size 100 ug

Applications



Western Blot

Western Blot analysis of Lane 1: recombinant protein and Lane 2: human pancreas tissue lysate with ELA3B monoclonal antibody, clone CELA3B/1811 (Cat # MAB14787).

Specification

Product Description	Mouse monoclonal antibody raised against partial recombinant human ELA3B.
Immunogen	Recombinant protein corresponding to amino acids 82-238 of human ELA3B.
Host	Mouse
Theoretical MW (kDa)	~17
Reactivity	Human
Form	Liquid
Purification	Protein A/G purification
Isotype	IgG2b, kappa
Recommend Usage	ELISA (2-4 ug/mL for coating) Flow Cytometry (0.5-1 ug/10 ⁶ cells) Immunofluorescence (0.5-1 ug/mL) Western Blotting (0.5-1 ug/mL) The optimal working dilution should be determined by the end user.

Storage Buffer

In 10 mM PBS.

Storage Instruction

Store at -20 to -80°C.

Aliquot to avoid repeated freezing and thawing.

Applications

- Western Blot

Western Blot analysis of Lane 1: recombinant protein and Lane 2: human pancreas tissue lysate with ELA3B monoclonal antibody, clone CELA3B/1811 (Cat # MAB14787).

- Immunofluorescence

- Enzyme-linked Immunoabsorbent Assay

- Flow Cytometry

Gene Info — ELA3B

Entrez GeneID[23436](#)**Protein Accession#**[P08861](#)**Gene Name**

ELA3B

Gene Alias

-

Gene Description

elastase 3B, pancreatic

Gene Ontology[Hyperlink](#)**Gene Summary**

Elastases form a subfamily of serine proteases that hydrolyze many proteins in addition to elastin. Humans have six elastase genes which encode the structurally similar proteins elastase 1, 2, 2A, 2B, 3A, and 3B. Unlike other elastases, elastase 3B has little elastolytic activity. Like most of the human elastases, elastase 3B is secreted from the pancreas as a zymogen and, like other serine proteases such as trypsin, chymotrypsin and kallikrein, it has a digestive function in the intestine. Elastase 3B preferentially cleaves proteins after alanine residues. Elastase 3B may also function in the intestinal transport and metabolism of cholesterol. Both elastase 3A and elastase 3B have been referred to as protease E and as elastase 1, and excretion of this protein in fecal material is frequently used as a measure of pancreatic function in clinical assays. [provided by RefSeq

Other Designations

OTTHUMP00000002837|elastase 1|elastase 3B|protease E

Publication Reference

- [Pancreatic elastase IIIA and its variants are expressed in pancreatic carcinoma cells.](#)

Shimada S, Yamaguchi K, Takahashi M, Ogawa M.

International Journal of Molecular Medicine 2002 Nov; 10(5):599.

- [Identification of a novel class of elastase isozyme, human pancreatic elastase III, by cDNA and genomic gene cloning.](#)

Tani T, Ohsumi J, Mita K, Takiguchi Y.

The Journal of Biological Chemistry 1998 Jan; 263(3):1231.