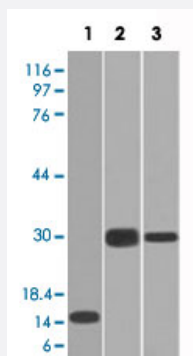


# ELA3B monoclonal antibody, clone CELA3B/1218

Catalog # MAB14786

Size 100 ug

## Applications



### Western Blot

Western Blot analysis of Lane 1: recombinant protein, Lane 2: Panc-28 cell and Lane 3: PANC1 cell lysates with ELA3B monoclonal antibody, clone CELA3B/1218 (Cat # MAB14786).

## Specification

**Product Description** Mouse monoclonal antibody raised against partial recombinant human ELA3B.

**Immunogen** Recombinant protein corresponding to amino acids 82-238 of human ELA3B.

**Host** Mouse

**Theoretical MW (kDa)** ~17

**Reactivity** Human

**Form** Liquid

**Purification** Protein A/G purification

**Isotype** IgG1, kappa

**Recommend Usage**

- ELISA (2-4 ug/mL for coating)
- Flow Cytometry (0.5-1 ug/10<sup>6</sup> cells)
- Immunofluorescence (0.5-1 ug/mL)
- Western Blotting (0.5-1 ug/mL)
- The optimal working dilution should be determined by the end user.

**Storage Buffer**

In 10 mM PBS.

**Storage Instruction**

Store at -20 to -80°C.  
Aliquot to avoid repeated freezing and thawing.

## Applications

- Western Blot

Western Blot analysis of Lane 1: recombinant protein, Lane 2: Panc-28 cell and Lane 3: PANC1 cell lysates with ELA3B monoclonal antibody, clone CELA3B/1218 (Cat # MAB14786).

- Immunofluorescence

- Enzyme-linked Immunoabsorbent Assay

- Flow Cytometry

## Gene Info — ELA3B

**Entrez GeneID**[23436](#)**Protein Accession#**[P08861](#)**Gene Name**

ELA3B

**Gene Alias**

-

**Gene Description**

elastase 3B, pancreatic

**Gene Ontology**[Hyperlink](#)**Gene Summary**

Elastases form a subfamily of serine proteases that hydrolyze many proteins in addition to elastin. Humans have six elastase genes which encode the structurally similar proteins elastase 1, 2, 2A, 2B, 3A, and 3B. Unlike other elastases, elastase 3B has little elastolytic activity. Like most of the human elastases, elastase 3B is secreted from the pancreas as a zymogen and, like other serine proteases such as trypsin, chymotrypsin and kallikrein, it has a digestive function in the intestine. Elastase 3B preferentially cleaves proteins after alanine residues. Elastase 3B may also function in the intestinal transport and metabolism of cholesterol. Both elastase 3A and elastase 3B have been referred to as protease E and as elastase 1, and excretion of this protein in fecal material is frequently used as a measure of pancreatic function in clinical assays. [provided by RefSeq

**Other Designations**

OTTHUMP00000002837|elastase 1|elastase 3B|protease E

## Publication Reference

- [Pancreatic elastase IIIA and its variants are expressed in pancreatic carcinoma cells.](#)

Shimada S, Yamaguchi K, Takahashi M, Ogawa M.

International Journal of Molecular Medicine 2002 Nov; 10(5):599.

- [Molecular cloning of complementary DNA encoding one of the human pancreatic protease E isozymes.](#)

Shirasu Y, Takemura K, Yoshida H, Sato Y, Iijima H, Shimada Y, Mikayama T, Ozawa T, Ikeda N, Ishida A, et al.

Journal of Biochemistry 1988 Aug; 104(2):259.

- [Identification of a novel class of elastase isozyme, human pancreatic elastase III, by cDNA and genomic gene cloning.](#)

Tani T, Ohsumi J, Mita K, Takiguchi Y.

The Journal of Biological Chemistry 1998 Jan; 263(3):1231.