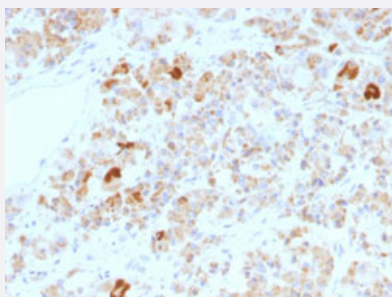


# LH, alpha monoclonal antibody, clone LHα/756

Catalog # MAB14733      Size 100 ug

## Applications



### Immunohistochemistry (Formalin/PFA-fixed paraffin-embedded sections)

Immunohistochemical staining (Formalin-fixed paraffin-embedded sections) of human pituitary gland with LH, alpha monoclonal antibody, clone LHα/756 (Cat # MAB14733).

## Specification

<b>Product Description</b>	Mouse monoclonal antibody raised against full length recombinant human LH, alpha.
<b>Immunogen</b>	Recombinant protein corresponding to full length human LH, alpha.
<b>Host</b>	Mouse
<b>Theoretical MW (kDa)</b>	~13
<b>Reactivity</b>	Human
<b>Form</b>	Liquid
<b>Purification</b>	Protein A/G purification
<b>Isotype</b>	IgG1, kappa
<b>Recommend Usage</b>	Immunohistochemistry (Formalin/PFA-fixed paraffin-embedded sections) (1-2 ug/mL) The optimal working dilution should be determined by the end user.
<b>Storage Buffer</b>	In 10 mM PBS.
<b>Storage Instruction</b>	Store at -20 to -80°C. Aliquot to avoid repeated freezing and thawing.

## Applications

- Immunohistochemistry (Formalin/PFA-fixed paraffin-embedded sections)

Immunohistochemical staining (Formalin-fixed paraffin-embedded sections) of human pituitary gland with LH, alpha monoclonal antibody, clone LHa/756 (Cat # MAB14733).

## Publication Reference

- [The control of gonadotrophin secretion by ovarian steroids.](#)

Couzinet B, Schaison G.

Human Reproduction 1993 Nov; 8 Suppl 2:97.