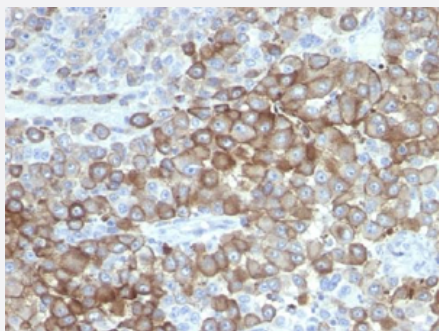


Melanoma monoclonal antibody, clone PNL2

Catalog # MAB14714 Size 100 ug

Applications



Immunohistochemistry (Formalin/PFA-fixed paraffin-embedded sections)

Immunohistochemical staining (Formalin-fixed paraffin-embedded sections) of human melanoma with Melanoma monoclonal antibody, clone PNL2 (Cat # MAB14714).

Specification

Product Description Mouse monoclonal antibody raised against human melanoma.

Immunogen Melanocyte antigen

Host Mouse

Reactivity Human

Form Liquid

Purification Protein A/G purification

Isotype IgG1

Recommend Usage Immunofluorescence (0.5-1 ug/mL)
Immunohistochemistry (Formalin/PFA-fixed paraffin-embedded sections) (0.5-1 ug/mL)
The optimal working dilution should be determined by the end user.

Storage Buffer In 10 mM PBS.

Storage Instruction Store at 4°C. For long term storage store at -20°C.
Aliquot to avoid repeated freezing and thawing.

Applications

- Immunohistochemistry (Formalin/PFA-fixed paraffin-embedded sections)

Immunohistochemical staining (Formalin-fixed paraffin-embedded sections) of human melanoma with Melanoma monoclonal antibody, clone PNL2 (Cat # MAB14714).

- Immunofluorescence

Publication Reference

- [PNL2, a new monoclonal antibody directed against a fixative-resistant melanocyte antigen.](#)

Rochaix P, Lacroix-Triki M, Lamant L, Pichereaux C, Valmary S, Puente E, Al Saati T, Monsarrat B, Susini C, Buscail L, Delsol G, Voigt JJ.

Modern Pathology 2003 May; 16(5):481.

Application: IHC-P, Human, Mouse, Melanocytes