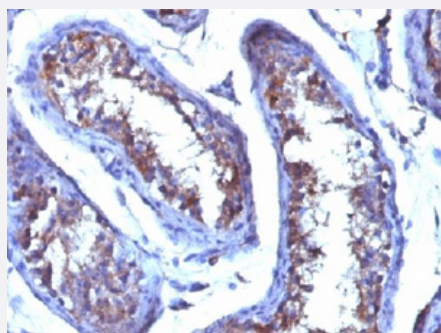


Testosterone monoclonal antibody, clone 4E1G2

Catalog # MAB14711 Size 100 ug

Applications



Immunohistochemistry (Formalin/PFA-fixed paraffin-embedded sections)

Immunohistochemical staining (Formalin-fixed paraffin-embedded sections) of human testicular carcinoma with Testosterone monoclonal antibody, clone 4E1G2 (Cat # MAB14711).

Specification

Product Description Mouse monoclonal antibody raised against human testosterone.

Immunogen Testosterone-3-carboxy-methyl-oxime conjugated to BSA.

Host Mouse

Specificity

- Reacts with testosterone 100%
- 11-beta-hydroxy testosterone 3.3%
- 17-alpha-methyl testosterone <0.1%
- 5-alpha DHT 0.8%
- estradiol <0.1%
- progesterone <0.1%

Form Liquid

Purification Protein A/G purification

Isotype IgG1, kappa

Recommend Usage

- ELISA
- Immunohistochemistry (Formalin/PFA-fixed paraffin-embedded sections) (0.25-0.5 ug/mL)
- Radioimmunoassay
- The optimal working dilution should be determined by the end user.

Storage Buffer

In 10 mM PBS.

Storage Instruction

Store at 4°C. For long term storage store at -20°C.
Aliquot to avoid repeated freezing and thawing.

Applications

- Immunohistochemistry (Formalin/PFA-fixed paraffin-embedded sections)

Immunohistochemical staining (Formalin-fixed paraffin-embedded sections) of human testicular carcinoma with Testosterone monoclonal antibody, clone 4E1G2 (Cat # MAB14711).

- Enzyme-linked Immunoabsorbent Assay
- Radioimmunoassay

Publication Reference

- [Characterisation of monoclonal antibodies raised against testosterone.](#)

Fantl VE, Wang DY.

Journal of Steroid Biochemistry 1983 Nov; 19(5):1605.

Application: RIA, Human, Myeloma cell line P3/Nsl/-Ag4-1 cells