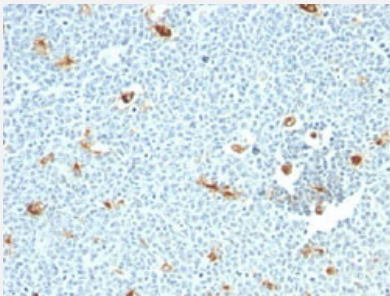


Macrophage monoclonal antibody, clone LN-5

Catalog # MAB14659 Size 100 ug

Applications



Immunohistochemistry (Formalin/PFA-fixed paraffin-embedded sections)

Immunohistochemical staining (Formalin-fixed paraffin-embedded sections) of human tonsil with Macrophage monoclonal antibody, clone LN-5 (Cat # MAB14659).

Specification

Product Description	Mouse monoclonal antibody raised against human macrophage.
Immunogen	Human peripheral blood mononuclear cells.
Host	Mouse
Reactivity	Human
Form	Liquid
Purification	PEG precipitation
Isotype	IgM, kappa
Recommend Usage	Flow Cytometry (0.5-1 ug/million cells in 0.1 mL) Immunofluorescence (0.5-1 ug/mL) Immunohistochemistry (Formalin/PFA-fixed paraffin-embedded sections) (1-2 ug/mL) The optimal working dilution should be determined by the end user.
Storage Buffer	In PBS (0.05% sodium azide).
Storage Instruction	Store at 4°C.

Note

This product contains sodium azide: a POISONOUS AND HAZARDOUS SUBSTANCE which should be handled by trained staff only.

Applications

- Immunohistochemistry (Formalin/PFA-fixed paraffin-embedded sections)

Immunohistochemical staining (Formalin-fixed paraffin-embedded sections) of human tonsil with Macrophage monoclonal antibody, clone LN-5 (Cat # MAB14659).

- Immunofluorescence
- Flow Cytometry

Publication Reference

- [LN-5 antibody against human macrophages cross-reacts with routinely processed human sebaceous glands.](#)

Lis GJ, Litwin JA, Furgał-Borzych A, Pyka-Foćiak G.

Folia Histochemica et Cytobiologica 2012 Jul; 50(2):319.

Application: IF, IHC-P, Human, Human lungs, Human sebaceous glands, Human skins

- [Lymphomas of true histiocytic origin. Expression of different phenotypes in so-called true histiocytic lymphoma and malignant histiocytosis.](#)

Hsu SM, Ho YS, Hsu PL.

The American Journal of Pathology 1991 Jun; 138(6):1389.

Application: IHC-P, Human, Fresh tissues from lymph nodes or tumor biopsy specimens