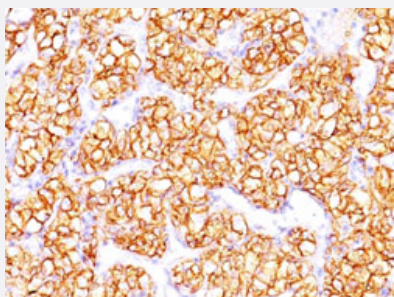


# CA9 monoclonal antibody, clone PN-15

Catalog # MAB14652      Size 100 ug

## Applications



### Immunohistochemistry (Formalin/PFA-fixed paraffin-embedded sections)

Immunohistochemical staining (Formalin-fixed paraffin-embedded sections) of human renal cell carcinoma with CA9 monoclonal antibody, clone PN-15 (Cat # MAB14652).

## Specification

<b>Product Description</b>	Mouse monoclonal antibody raised against native human CA9.
<b>Immunogen</b>	Microsomal fraction of human renal cortical tissue homogenate.
<b>Host</b>	Mouse
<b>Theoretical MW (kDa)</b>	55
<b>Reactivity</b>	Human
<b>Form</b>	Liquid
<b>Purification</b>	Protein A purification
<b>Isotype</b>	IgG2b, kappa
<b>Recommend Usage</b>	Flow Cytometry (0.5-1 ug/million cells in 0.1 mL) Immunofluorescence (1-2 ug/mL) Immunohistochemistry (Formalin/PFA-fixed paraffin-embedded sections) (0.5-1 ug/mL) Western Blot (0.5-1 ug/mL) The optimal working dilution should be determined by the end user.
<b>Storage Buffer</b>	In PBS.

## Storage Instruction

Store at -20°C.

Aliquot to avoid repeated freezing and thawing.

## Applications

- Western Blot
- Immunohistochemistry (Formalin/PFA-fixed paraffin-embedded sections)

Immunohistochemical staining (Formalin-fixed paraffin-embedded sections) of human renal cell carcinoma with CA9 monoclonal antibody, clone PN-15 (Cat # MAB14652).

- Immunofluorescence
- Flow Cytometry

## Gene Info — CA9

Entrez GeneID	<a href="#">768</a>
---------------	---------------------

Protein Accession#	<a href="#">Q16790</a>
--------------------	------------------------

Gene Name	CA9
-----------	-----

Gene Alias	CAIX, MN
------------	----------

Gene Description	carbonic anhydrase IX
------------------	-----------------------

Omim ID	<a href="#">603179</a>
---------	------------------------

Gene Ontology	<a href="#">Hyperlink</a>
---------------	---------------------------

Gene Summary	Carbonic anhydrases (CAs) are a large family of zinc metalloenzymes that catalyze the reversible hydration of carbon dioxide. They participate in a variety of biological processes, including respiration, calcification, acid-base balance, bone resorption, and the formation of aqueous humor, cerebrospinal fluid, saliva, and gastric acid. They show extensive diversity in tissue distribution and in their subcellular localization. CA IX is a transmembrane protein and the only tumor-associated carbonic anhydrase isoenzyme known. It is expressed in all clear-cell renal cell carcinoma, but is not detected in normal kidney or most other normal tissues. It may be involved in cell proliferation and transformation. This gene was mapped to 17q21.2 by fluorescence in situ hybridization, however, radiation hybrid mapping localized it to 9p13-p12. [provided by RefSeq]
--------------	--

Other Designations	OTTHUMP00000022773 RCC-associated protein G250 carbonic dehydratase
--------------------	---

## Publication Reference

- [Monoclonal antibody to a proximal nephrogenic renal antigen: immunohistochemical analysis of formalin-fixed, paraffin-embedded human renal cell carcinomas.](#)

Yoshida SO, Imam A.

Cancer Research 1989 Apr; 49(7):1802.

Application: IHC-P, WB-Ce, WB-Ti, Human, Human renal cell carcinomas, Human tissues, RC.7 cells

## Pathway

- [Nitrogen metabolism](#)

## Disease

- [Alzheimer disease](#)
- [Carcinoma](#)
- [Cardiovascular Diseases](#)
- [Cerebral Amyloid Angiopathy](#)
- [Diabetes Mellitus](#)
- [Edema](#)
- [Genetic Predisposition to Disease](#)
- [Head and Neck Neoplasms](#)
- [Kidney Neoplasms](#)
- [Neoplasm Recurrence](#)
- [Neoplasms](#)
- [Neuroblastoma](#)