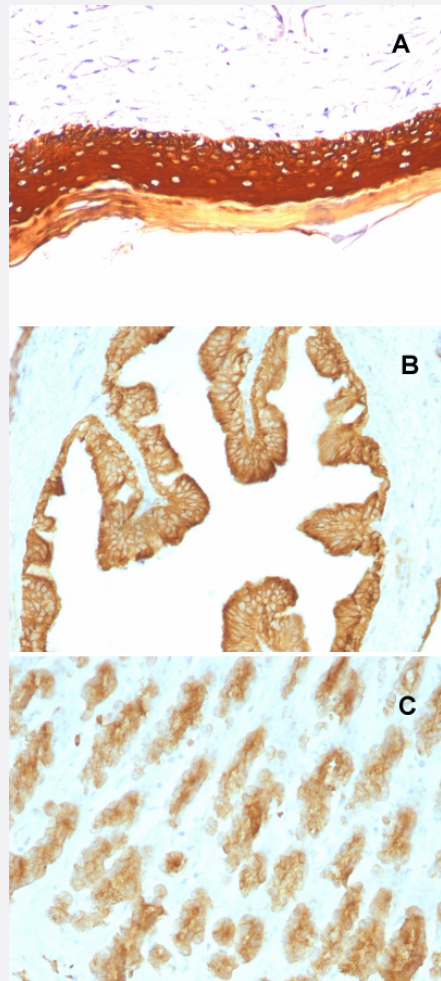


KRT77 monoclonal antibody, clone KRTL/1077

Catalog # MAB14643 Size 100 ug

Applications



Immunohistochemistry (Formalin/PFA-fixed paraffin-embedded sections)

Immunohistochemical staining (Formalin-fixed paraffin-embedded sections) of (A) human skin (B) rat oviduct and (C) rat stomach with KRT77 monoclonal antibody, clone KRTL/1077 (Cat # MAB14643).

Specification

Product Description	Mouse monoclonal antibody raised against full length recombinant human KRT77.
Immunogen	Recombinant protein corresponding to full length human KRT77.
Host	Mouse

Theoretical MW (kDa)	56.5, 50, 48, 40
Reactivity	Human, Rat
Specificity	This antibody recognizes the 56.5 kDa (CK10); 50 kDa (CK14); 50 kDa (CK15); 48 kDa (CK16); 40 kDa (CK19) keratins of the acidic (Type I or LMW) subfamily.
Form	Liquid
Purification	Protein A/G purification
Isotype	IgG1, kappa
Recommend Usage	Flow Cytometry (0.5-1 ug/million cells in 0.1 mL) Immunofluorescence (1-2 ug/mL) Immunohistochemistry (Formalin/PFA-fixed paraffin-embedded sections) (0.5-1 ug/mL) Western Blot (0.5-1 ug/mL) The optimal working dilution should be determined by the end user.
Storage Buffer	In 10 mM PBS (0.05% BSA and 0.05% azide).
Storage Instruction	Store at 4°C.
Note	This product contains sodium azide: a POISONOUS AND HAZARDOUS SUBSTANCE which should be handled by trained staff only.

Applications

- Western Blot
- Immunohistochemistry (Formalin/PFA-fixed paraffin-embedded sections)
Immunohistochemical staining (Formalin-fixed paraffin-embedded sections) of (A) human skin (B) rat oviduct and (C) rat stomach with KRT77 monoclonal antibody, clone KRTL/1077 (Cat # MAB14643).
- Immunofluorescence
- Flow Cytometry

Gene Info — KRT77

Entrez GeneID	374454
Protein Accession#	Q7Z794
Gene Name	KRT77

Gene Alias	K1B, KRT1B, MGC148087
Gene Description	keratin 77
Omim ID	611158
Gene Ontology	Hyperlink
Gene Summary	Keratins are intermediate filament proteins responsible for the structural integrity of epithelial cells and are subdivided into epithelial keratins and hair keratins. This gene encodes an epithelial keratin that is expressed in the skin and eccrine sweat glands. The type II keratins are clustered in a region of chromosome 12q13
Other Designations	keratin 1B

Publication Reference

- [Immunolocalization of keratin polypeptides in human epidermis using monoclonal antibodies.](#)
J Woodcock-Mitchell, R Eichner, W G Nelson, T T Sun.
The Journal of Cell Biology 1982 Nov; 95(2 Pt 1):580.
- [Correlation of specific keratins with different types of epithelial differentiation: monoclonal antibody studies.](#)
S C Tseng, M J Jarvinen, W G Nelson, J W Huang, J Woodcock-Mitchell, T T Sun.
Cell 1982 Sep; 30(2):361.