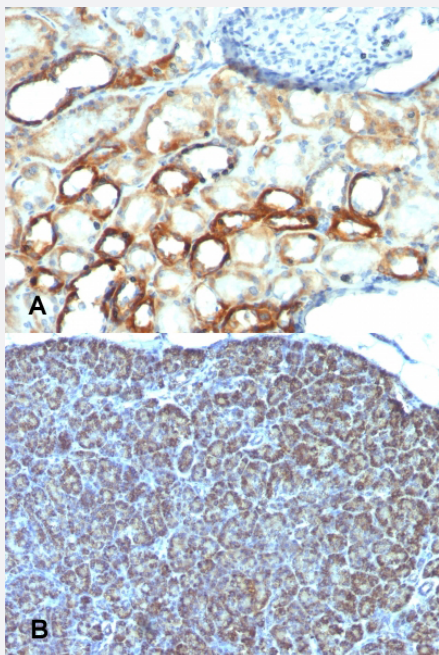


Mitochondria monoclonal antibody, clone AE-1

Catalog # MAB14641 Size 100 ug

Applications



Immunohistochemistry (Formalin/PFA-fixed paraffin-embedded sections)

Immunohistochemical staining (Formalin-fixed paraffin-embedded sections) of (A) human tonsil and (B) human pancreas with Mitochondria monoclonal antibody, clone AE-1 (Cat # MAB14641).

Specification

Product Description	Mouse monoclonal antibody raised against human mitochondria.
Immunogen	Semi-purified mitochondrial preparation.
Host	Mouse
Theoretical MW (kDa)	60
Reactivity	Human
Specificity	This antibody recognizes a 60 kDa antigen associated with the mitochondria in human cells. It reacts specifically with human cells, including neurons and embryonic stem cells.
Form	Liquid

Purification	Protein A/G purification
Isotype	IgG1, kappa
Recommend Usage	Immunofluorescence (0.5-1 ug/mL) Immunohistochemistry (Formalin/PFA-fixed paraffin-embedded sections) (0.5-1 ug/mL) Western Blot (0.25-0.5 ug/mL) The optimal working dilution should be determined by the end user.
Storage Buffer	In 10 mM PBS (0.05% BSA and 0.05% azide).
Storage Instruction	Store at 4°C.
Note	This product contains sodium azide: a POISONOUS AND HAZARDOUS SUBSTANCE which should be handled by trained staff only.

Applications

- Western Blot
- Immunohistochemistry (Formalin/PFA-fixed paraffin-embedded sections)
Immunohistochemical staining (Formalin-fixed paraffin-embedded sections) of (A) human tonsil and (B) human pancreas with Mitochondria monoclonal antibody, clone AE-1 (Cat # MAB14641).
- Immunofluorescence