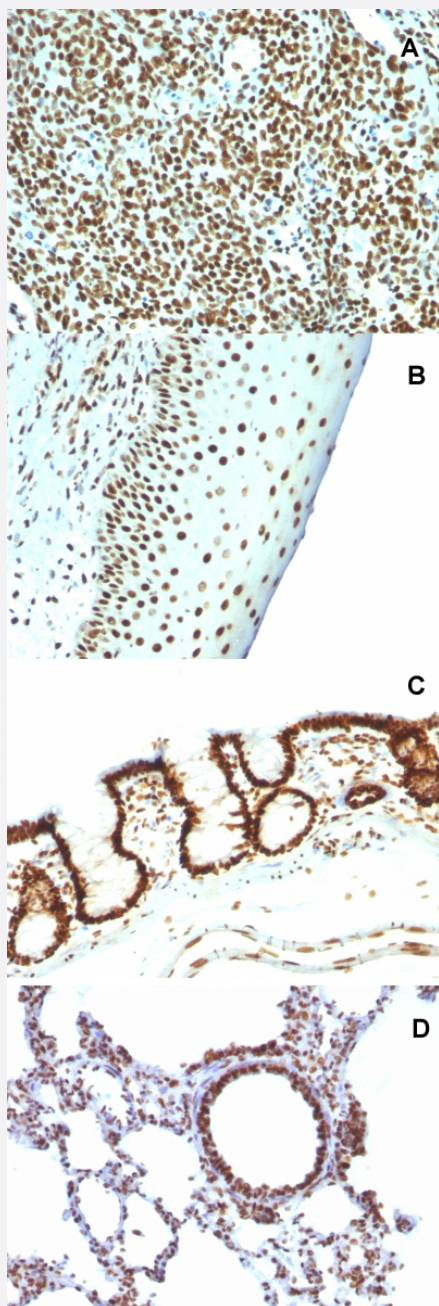


Nuclear antigen monoclonal antibody, clone NM106

Catalog # MAB14637 Size 100 ug

Applications



Immunohistochemistry (Formalin/PFA-fixed paraffin-embedded sections)

Immunohistochemical staining (Formalin-fixed paraffin-embedded sections) of (A) human tonsil (B) human tonsil (C) rat colon and (D) rat lung with Nuclear antigen monoclonal antibody, clone NM106 (Cat # MAB14637).

Specification

Product Description	Mouse monoclonal antibody raised against nuclear antigen.
Immunogen	Nuclei of HL60 cells.
Host	Mouse
Reactivity	Human, Rat
Specificity	This antibody recognizes an antigen associated with the nuclei in all cells.
Form	Liquid
Purification	Protein A/G purification
Isotype	IgG1, kappa
Recommend Usage	Flow Cytometry (0.5-1 ug/million cells in 0.1 mL) Immunocytochemistry (0.25-0.5 ug/mL) Immunofluorescence (0.5-1 ug/mL) Immunohistochemistry (Formalin/PFA-fixed paraffin-embedded sections) (0.25-0.5 ug/mL) The optimal working dilution should be determined by the end user.
Storage Buffer	In 10 mM PBS (0.05% BSA and 0.05% azide).
Storage Instruction	Store at 4°C.
Note	This product contains sodium azide: a POISONOUS AND HAZARDOUS SUBSTANCE which should be handled by trained staff only.

Applications

- Immunohistochemistry (Formalin/PFA-fixed paraffin-embedded sections)

Immunohistochemical staining (Formalin-fixed paraffin-embedded sections) of (A) human tonsil (B) human tonsil (C) rat colon and (D) rat lung with Nuclear antigen monoclonal antibody, clone NM106 (Cat # MAB14637).

- Immunocytochemistry
- Immunofluorescence
- Flow Cytometry