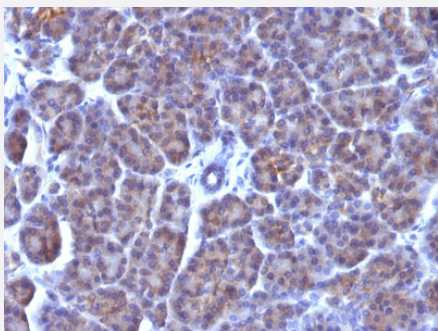


Golgi complex monoclonal antibody, clone AE-6

Catalog # MAB14630 Size 100 ug

Applications



Immunohistochemistry (Formalin/PFA-fixed paraffin-embedded sections)

Immunohistochemical staining (Formalin-fixed paraffin-embedded sections) of human pancreas with Golgi complex monoclonal antibody, clone AE-6 (Cat # MAB14630).

Specification

Product Description	Mouse monoclonal antibody raised against human golgi complex.
Immunogen	SU-DHL-1 large cell lymphoma cells.
Host	Mouse
Reactivity	Human
Specificity	This antibody recognizes an antigen associated with the golgi complex in human cells only.
Form	Liquid
Purification	Protein A/G purification
Isotype	IgG1, kappa
Recommend Usage	Flow Cytometry (0.5-1 ug/million cells in 0.1 mL) Immunocytochemistry (0.5-1 ug/mL) Immunofluorescence (0.5-1 ug/mL) Immunohistochemistry (Formalin/PFA-fixed paraffin-embedded sections) (0.5-1 ug/mL) Western Blot (0.5-1 ug/mL) The optimal working dilution should be determined by the end user.

Storage Buffer

In 10 mM PBS.

Storage Instruction

Store at -20 to -80°C.

Aliquot to avoid repeated freezing and thawing.

Applications

- Western Blot
- Immunohistochemistry (Formalin/PFA-fixed paraffin-embedded sections)
Immunohistochemical staining (Formalin-fixed paraffin-embedded sections) of human pancreas with Golgi complex monoclonal antibody, clone AE-6 (Cat # MAB14630).
- Immunocytochemistry
- Immunofluorescence
- Flow Cytometry

Publication Reference

- [Cellular localization and functional characterization of the equilibrative nucleoside transporters of antitumor nucleosides.](#)
Endo Y, Obata T, Murata D, Ito M, Sakamoto K, Fukushima M, Yamasaki Y, Yamada Y, Natsume N, Sasaki T.
Cancer Science 2007 Oct; 98(10):1633.
- [Binding and phosphorylation of a novel male germ cell-specific cGMP-dependent protein kinase-anchoring protein by cGMP-dependent protein kinase Ialpha.](#)
Yuasa K, Omori K, Yanaka N.
The Journal of Biological Chemistry 2000 Feb; 275(7):4897.