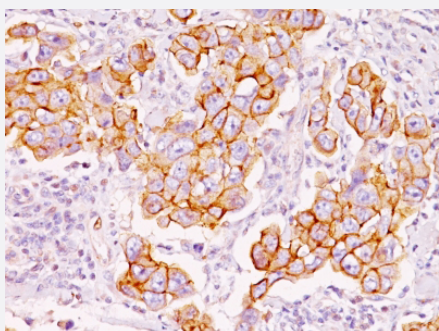


# Phosphotyrosine monoclonal antibody, clone PY793

Catalog # MAB14628      Size 100 ug

## Applications



### Immunohistochemistry (Formalin/PFA-fixed paraffin-embedded sections)

Immunohistochemical staining (Formalin-fixed paraffin-embedded sections) of human breast carcinoma with Phosphotyrosine monoclonal antibody, clone PY793 (Cat # MAB14628).

## Specification

<b>Product Description</b>	Mouse monoclonal antibody raised against phosphotyrosine.
<b>Immunogen</b>	Phosphotyrosine conjugated to BSA.
<b>Host</b>	Mouse
<b>Specificity</b>	This antibody shows no cross-reaction with other phosphoamino acids.
<b>Form</b>	Liquid
<b>Purification</b>	Protein A/G purification
<b>Isotype</b>	IgG2b
<b>Recommend Usage</b>	Flow Cytometry (0.5-1 ug/million cells in 0.1 mL) Immunofluorescence (1-2 ug/mL) Immunohistochemistry (Formalin/PFA-fixed paraffin-embedded sections) (1-2 ug/mL) The optimal working dilution should be determined by the end user.
<b>Storage Buffer</b>	In 10 mM PBS.
<b>Storage Instruction</b>	Store at -20 to -80°C. Aliquot to avoid repeated freezing and thawing.

## Applications

- Immunohistochemistry (Formalin/PFA-fixed paraffin-embedded sections)

Immunohistochemical staining (Formalin-fixed paraffin-embedded sections) of human breast carcinoma with Phosphotyrosine monoclonal antibody, clone PY793 (Cat # MAB14628).

- Immunofluorescence

- Flow Cytometry

## Publication Reference

- [Protein-tyrosine kinases.](#)

T Hunter, J A Cooper.

Annual Review of Biochemistry 1985 Jul; 54:897.