

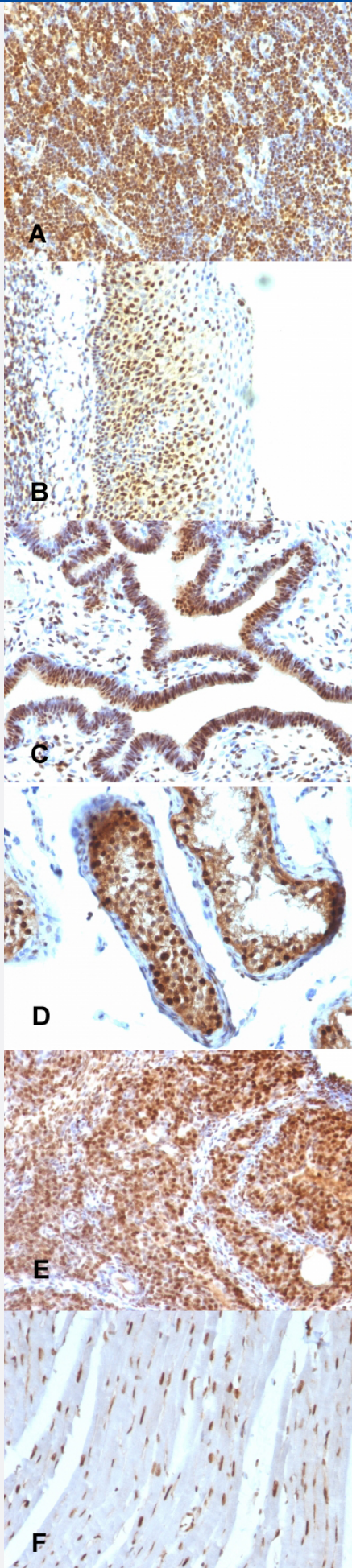
SUMO2 monoclonal antibody, clone SUMO2/1199

Catalog # MAB14604 Size 100 ug

Applications

Immunohistochemistry (Formalin/PFA-fixed paraffin-embedded sections)

Immunohistochemical staining (Formalin-fixed paraffin-embedded sections) of (A)(B) human tonsil (C) human ovarian carcinoma (D) human testicular carcinoma (E) rat ovary and (F) rat heart with SUMO2 monoclonal antibody, clone SUMO2/1199 (Cat # MAB14604).



Specification

Product Description	Mouse monoclonal antibody raised against full length recombinant human SUMO2.
Immunogen	Recombinant protein corresponding to full length human SUMO2.
Host	Mouse
Theoretical MW (kDa)	11-13
Reactivity	Human, Rat
Form	Liquid
Purification	Protein A/G purification
Isotype	IgG1, kappa
Recommend Usage	Flow Cytometry (0.5-1 ug/million cells in 0.1 mL) Immunofluorescence (0.5-1 ug/mL) Immunohistochemistry (Formalin/PFA-fixed paraffin-embedded sections) (0.5-1 ug/mL) The optimal working dilution should be determined by the end user.
Storage Buffer	In 10 mM PBS.
Storage Instruction	Store at -20 to -80°C. Aliquot to avoid repeated freezing and thawing.

Applications

- Immunohistochemistry (Formalin/PFA-fixed paraffin-embedded sections)

Immunohistochemical staining (Formalin-fixed paraffin-embedded sections) of (A)(B) human tonsil (C) human ovarian carcinoma (D) human testicular carcinoma (E) rat ovary and (F) rat heart with SUMO2 monoclonal antibody, clone SUMO2/1199 (Cat # MAB14604).

- Immunofluorescence
- Flow Cytometry

Gene Info — SUMO2

Entrez GeneID

[6613](#)

Protein Accession#	P55854
Gene Name	SUMO2
Gene Alias	HSMT3, MGC117191, SMT3B, SMT3H2
Gene Description	SMT3 suppressor of mif two 3 homolog 2 (S. cerevisiae)
Omim ID	603042
Gene Ontology	Hyperlink
Gene Summary	<p>This gene encodes a protein that is a member of the SUMO (small ubiquitin-like modifier) protein family. It functions in a manner similar to ubiquitin in that it is bound to target proteins as part of a post-translational modification system. However, unlike ubiquitin which targets proteins for degradation, this protein is involved in a variety of cellular processes, such as nuclear transport, transcriptional regulation, apoptosis, and protein stability. It is not active until the last two amino acids of the carboxy-terminus have been cleaved off. Numerous pseudogenes have been reported for this gene. Alternate transcriptional splice variants, encoding different isoforms, have been characterized. [provided by RefSeq]</p>
Other Designations	SMT3 suppressor of mif two 3 homolog 2 sentrin 2 small ubiquitin-like modifier 2, isoform a