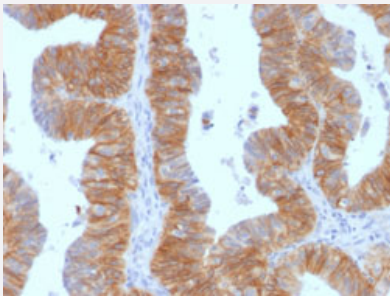


# EPCAM monoclonal antibody, clone EGP40/1384

Catalog # MAB14587      Size 100 ug

## Applications



### Immunohistochemistry (Formalin/PFA-fixed paraffin-embedded sections)

Immunohistochemical staining (Formalin-fixed paraffin-embedded sections) of human ovarian carcinoma with EPCAM monoclonal antibody, clone EGP40/1384 (Cat # MAB14587).

## Specification

<b>Product Description</b>	Mouse monoclonal antibody raised against partial recombinant human EPCAM.
<b>Immunogen</b>	Recombinant protein corresponding to amino acids 77-202 at extracellular domain of human EPCAM.
<b>Host</b>	Mouse
<b>Theoretical MW (kDa)</b>	40-43
<b>Reactivity</b>	Human
<b>Form</b>	Liquid
<b>Purification</b>	Protein A/G purification
<b>Isotype</b>	IgG
<b>Recommend Usage</b>	Flow Cytometry (0.5-1 ug/10 <sup>6</sup> cells) Immunofluorescence (1-2 ug/mL) Immunohistochemistry (Formalin/PFA-fixed paraffin-embedded sections) (0.5-1 ug/mL) The optimal working dilution should be determined by the end user.
<b>Storage Buffer</b>	In 10 mM PBS (0.05% BSA, 0.05% sodium azide).

## Storage Instruction

Store at 4°C.

## Note

This product contains sodium azide: a POISONOUS AND HAZARDOUS SUBSTANCE which should be handled by trained staff only.

## Applications

- Immunohistochemistry (Formalin/PFA-fixed paraffin-embedded sections)

Immunohistochemical staining (Formalin-fixed paraffin-embedded sections) of human ovarian carcinoma with EPCAM monoclonal antibody, clone EGP40/1384 (Cat # MAB14587).

- Immunofluorescence

- Flow Cytometry

## Gene Info — EPCAM

## Entrez GeneID

[4072](#)

## Protein Accession#

[P16422](#)

## Gene Name

EPCAM

## Gene Alias

17-1A, 323/A3, CD326, CO-17A, CO17-1A, EGP, EGP-2, EGP34, EGP40, ESA, Ep-CAM, GA733-2, HEA125, KS1/4, KSA, M4S1, MH99, MIC18, MK-1, MOC31, TACST-1, TACSTD1, TROP1, hEGP-2

## Gene Description

epithelial cell adhesion molecule

## Omim ID

[185535](#)

## Gene Ontology

[Hyperlink](#)

## Gene Summary

This gene encodes a carcinoma-associated antigen and is a member of a family that includes at least two type I membrane proteins. This antigen is expressed on most normal epithelial cells and gastrointestinal carcinomas and functions as a homotypic calcium-independent cell adhesion molecule. The antigen is being used as a target for immunotherapy treatment of human carcinomas. Mutations in this gene result in congenital tufting enteropathy. [provided by RefSeq]

## Other Designations

adenocarcinoma-associated antigen|carcinoma-associated antigen GA733-2|human epithelial glycoprotein-2|membrane component, chromosome 4, surface marker (35kD glycoprotein)|tumor-associated calcium signal transducer 1

## Publication Reference

- [Ep-CAM: a human epithelial antigen is a homophilic cell-cell adhesion molecule.](#)

Litvinov SV, Velders MP, Bakker HA, Fleuren GJ, Warnaar SO.

The Journal of Cell Biology 1994 Apr; 125(2):437.

- [Immunohistochemical demonstration of breast-derived and/or carcinoma-associated glycoproteins in normal skin appendages and their tumors.](#)

Tsubura A, Senzaki H, Sasaki M, Hilgers J, Morii S.

Journal of Cutaneous Pathology 1992 Feb; 19(1):73.

## Disease

- [Genetic Predisposition to Disease](#)
- [Ovarian Neoplasms](#)