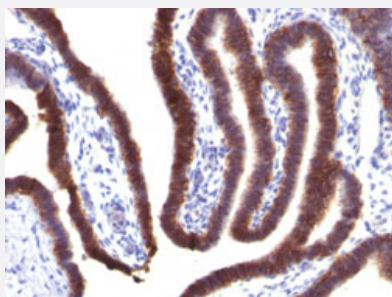


EPCAM monoclonal antibody, clone EGP40/1373

Catalog # MAB14586 Size 100 ug

Applications



Immunohistochemistry (Formalin/PFA-fixed paraffin-embedded sections)

Immunohistochemical staining (Formalin-fixed paraffin-embedded sections) of human fallopian tube with EPCAM monoclonal antibody, clone EGP40/1373 (Cat # MAB14586).

Specification

| | |
|----------------------|---|
| Product Description | Mouse monoclonal antibody raised against partial recombinant human EPCAM. |
| Immunogen | Recombinant protein corresponding to amino acids 77-202 at extracellular domain of human EPCAM. |
| Host | Mouse |
| Theoretical MW (kDa) | 40-43 |
| Reactivity | Human |
| Form | Liquid |
| Purification | Protein A/G purification |
| Isotype | IgG2b |
| Recommend Usage | Flow Cytometry (0.5-1 ug/10 ⁶ cells) Immunofluorescence (1-2 ug/mL) Immunohistochemistry (Formalin/PFA-fixed paraffin-embedded sections) (0.5-1 ug/mL) The optimal working dilution should be determined by the end user. |
| Storage Buffer | In 10 mM PBS (0.05% BSA, 0.05% sodium azide). |

Storage Instruction

Store at 4°C.

Note

This product contains sodium azide: a POISONOUS AND HAZARDOUS SUBSTANCE which should be handled by trained staff only.

Applications

- Immunohistochemistry (Formalin/PFA-fixed paraffin-embedded sections)

Immunohistochemical staining (Formalin-fixed paraffin-embedded sections) of human fallopian tube with EPCAM monoclonal antibody, clone EGP40/1373 (Cat # MAB14586).

- Immunofluorescence

- Flow Cytometry

Gene Info — EPCAM

Entrez GeneID[4072](#)**Protein Accession#**[P16422](#)**Gene Name**

EPCAM

Gene Alias

17-1A, 323/A3, CD326, CO-17A, CO17-1A, EGP, EGP-2, EGP34, EGP40, ESA, Ep-CAM, GA733-2, HEA125, KS1/4, KSA, M4S1, MH99, MIC18, MK-1, MOC31, TACST-1, TACSTD1, TROP1, hEGP-2

Gene Description

epithelial cell adhesion molecule

Omim ID[185535](#)**Gene Ontology**[Hyperlink](#)**Gene Summary**

This gene encodes a carcinoma-associated antigen and is a member of a family that includes at least two type I membrane proteins. This antigen is expressed on most normal epithelial cells and gastrointestinal carcinomas and functions as a homotypic calcium-independent cell adhesion molecule. The antigen is being used as a target for immunotherapy treatment of human carcinomas. Mutations in this gene result in congenital tufting enteropathy. [provided by RefSeq]

Other Designations

adenocarcinoma-associated antigen|carcinoma-associated antigen GA733-2|human epithelial glycoprotein-2|membrane component, chromosome 4, surface marker (35kD glycoprotein)|tumor-associated calcium signal transducer 1

Publication Reference

- [Ep-CAM: a human epithelial antigen is a homophilic cell-cell adhesion molecule.](#)

Litvinov SV, Velders MP, Bakker HA, Fleuren GJ, Warnaar SO.

The Journal of Cell Biology 1994 Apr; 125(2):437.

- [Immunohistochemical demonstration of breast-derived and/or carcinoma-associated glycoproteins in normal skin appendages and their tumors.](#)

Tsubura A, Senzaki H, Sasaki M, Hilgers J, Morii S.

Journal of Cutaneous Pathology 1992 Feb; 19(1):73.

Disease

- [Genetic Predisposition to Disease](#)
- [Ovarian Neoplasms](#)