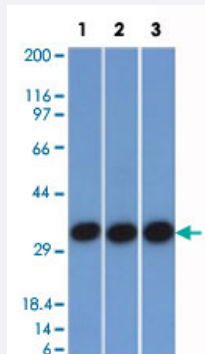


EPCAM monoclonal antibody, clone EGP40/1372

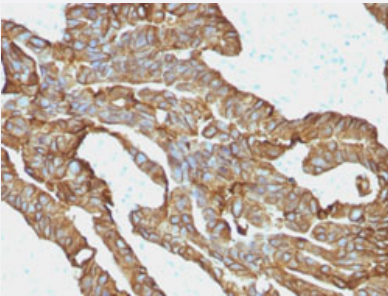
Catalog # MAB14585 Size 100 ug

Applications



Western Blot (Cell lysate)

Western Blot analysis of Lane 1: 293, Lane 2: A431 and Lane 3: HCT116 cell lysates with EPCAM monoclonal antibody, clone EGP40/1372 (Cat # MAB14585).



Immunohistochemistry (Formalin/PFA-fixed paraffin-embedded sections)

Immunohistochemical staining (Formalin-fixed paraffin-embedded sections) of human colorectal carcinoma with EPCAM monoclonal antibody, clone EGP40/1372 (Cat # MAB14585).

Specification

Product Description	Mouse monoclonal antibody raised against partial recombinant human EPCAM.
Immunogen	Recombinant protein corresponding to amino acids 77-202 at extracellular domain of human EPCAM.
Host	Mouse
Theoretical MW (kDa)	40-43
Reactivity	Human
Form	Liquid

Purification	Protein A/G purification
Isotype	IgG1
Recommend Usage	Flow Cytometry (0.5-1 ug/10 ⁶ cells) Immunofluorescence (1-2 ug/mL) Immunohistochemistry (Formalin/PFA-fixed paraffin-embedded sections) (0.5-1 ug/mL) Western Blotting (0.5-1 ug/mL) The optimal working dilution should be determined by the end user.
Storage Buffer	In 10 mM PBS (0.05% BSA, 0.05% sodium azide).
Storage Instruction	Store at 4°C.
Note	This product contains sodium azide: a POISONOUS AND HAZARDOUS SUBSTANCE which should be handled by trained staff only.

Applications

- Western Blot (Cell lysate)

Western Blot analysis of Lane 1: 293, Lane 2: A431 and Lane 3: HCT116 cell lysates with EPCAM monoclonal antibody, clone EGP40/1372 (Cat # MAB14585).

- Immunohistochemistry (Formalin/PFA-fixed paraffin-embedded sections)

Immunohistochemical staining (Formalin-fixed paraffin-embedded sections) of human colorectal carcinoma with EPCAM monoclonal antibody, clone EGP40/1372 (Cat # MAB14585).

- Immunofluorescence

- Flow Cytometry

Gene Info — EPCAM

Entrez GeneID	4072
Protein Accession#	P16422
Gene Name	EPCAM
Gene Alias	17-1A, 323/A3, CD326, CO-17A, CO17-1A, EGP, EGP-2, EGP34, EGP40, ESA, Ep-CAM, GA7 33-2, HEA125, KS1/4, KSA, M4S1, MH99, MIC18, MK-1, MOC31, TACST-1, TACSTD1, TROP 1, hEGP-2
Gene Description	epithelial cell adhesion molecule

Omim ID [185535](#)

Gene Ontology [Hyperlink](#)

Gene Summary This gene encodes a carcinoma-associated antigen and is a member of a family that includes at least two type I membrane proteins. This antigen is expressed on most normal epithelial cells and gastrointestinal carcinomas and functions as a homotypic calcium-independent cell adhesion molecule. The antigen is being used as a target for immunotherapy treatment of human carcinomas. Mutations in this gene result in congenital tufting enteropathy. [provided by RefSeq]

Other Designations adenocarcinoma-associated antigen|carcinoma-associated antigen GA733-2|human epithelial glycoprotein-2|membrane component, chromosome 4, surface marker (35kD glycoprotein)|tumor-associated calcium signal transducer 1

Publication Reference

- [Ep-CAM: a human epithelial antigen is a homophilic cell-cell adhesion molecule.](#)

Litvinov SV, Velders MP, Bakker HA, Fleuren GJ, Warnaar SO.

The Journal of Cell Biology 1994 Apr; 125(2):437.

- [Immunohistochemical demonstration of breast-derived and/or carcinoma-associated glycoproteins in normal skin appendages and their tumors.](#)

Tsubura A, Senzaki H, Sasaki M, Hilgers J, Morii S.

Journal of Cutaneous Pathology 1992 Feb; 19(1):73.

Disease

- [Genetic Predisposition to Disease](#)
- [Ovarian Neoplasms](#)