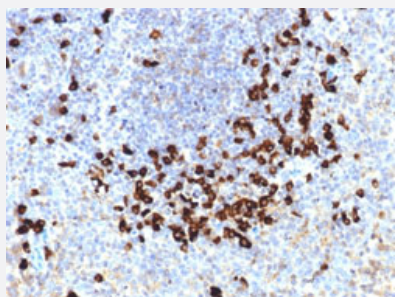


Lambda Light Chain monoclonal antibody, clone LLC/1738

Catalog # MAB14566 Size 100 ug

Applications



Immunohistochemistry (Formalin/PFA-fixed paraffin-embedded sections)

Immunohistochemical staining (Formalin-fixed paraffin-embedded sections) of human tonsil with Lambda Light Chain monoclonal antibody, clone LLC/1738 (Cat # MAB14566).

Specification

Product Description	Mouse monoclonal antibody raised against native human Lambda Light Chain.
Immunogen	Native purified human Lambda Light Chain.
Host	Mouse
Theoretical MW (kDa)	~22.5
Reactivity	Human
Form	Liquid
Purification	Protein A/G purification
Isotype	IgG1, kappa
Recommend Usage	Flow Cytometry (0.5-1 ug/10 ⁶ cells in 0.1 mL) Immunofluorescence (1-2 ug/mL) Immunohistochemistry (Formalin/PFA-fixed paraffin-embedded sections) (0.5-1 ug/mL) Western Blotting (0.5-1 ug/mL) The optimal working dilution should be determined by the end user.
Storage Buffer	In 10 mM PBS (0.05% BSA, 0.05% sodium azide).

Storage Instruction

Store at 4°C.

Note

This product contains sodium azide: a POISONOUS AND HAZARDOUS SUBSTANCE which should be handled by trained staff only.

Applications

- Western Blot
- Immunohistochemistry (Formalin/PFA-fixed paraffin-embedded sections)
Immunohistochemical staining (Formalin-fixed paraffin-embedded sections) of human tonsil with Lambda Light Chain monoclonal antibody, clone LLC/1738 (Cat # MAB14566).
- Immunofluorescence
- Flow Cytometry

Gene Info — IGLC1

Entrez GeneID [3537](#)**Protein Accession#** [P0CG04](#)**Gene Name** IGLC1**Gene Alias** IGLC**Gene Description** immunoglobulin lambda constant 1 (Mcg marker)**Omim ID** [147220](#)**Gene Ontology** [Hyperlink](#)**Other Designations** -

Publication Reference

- [The spectrum of monoclonal gammopathies affecting the kidney.](#)

Leung N, Gertz MA.

Leukemia & Lymphoma 2012 Sep; 53(9):1656.

- [Kidney light chain disease in patients with the acquired immunodeficiency syndrome.](#)

Villaverde RV, Darioli V, Hirschel B, McKee TA, Lobrinus JA, Moll S.

Clinical Kidney Journal 2012 Feb; 5(1):59.