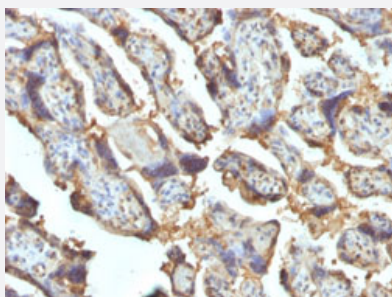


# LGALS13 monoclonal antibody, clone PP13/1162

Catalog # MAB14550      Size 100 ug

## Applications



### Immunohistochemistry (Formalin/PFA-fixed paraffin-embedded sections)

Immunohistochemical staining (Formalin-fixed paraffin-embedded sections) of human placenta with LGALS13 monoclonal antibody, clone PP13/1162 (Cat # MAB14550).

## Specification

Product Description	Mouse monoclonal antibody raised against partial recombinant human LGALS13.
Immunogen	Recombinant protein corresponding to amino acids 23-134 of human LGALS13.
Host	Mouse
Theoretical MW (kDa)	16, 32
Reactivity	Human
Form	Liquid
Purification	Protein A/G purification
Isotype	IgG2b
Recommend Usage	Flow Cytometry (0.5-1 ug/10 <sup>6</sup> cells) Immunofluorescence (0.5-1 ug/mL) Immunohistochemistry (Formalin/PFA-fixed paraffin-embedded sections) (0.5-1 ug/mL) The optimal working dilution should be determined by the end user.
Storage Buffer	In 1 mM PBS (0.05% BSA, 0.05% sodium azide).

**Storage Instruction**

Store at 4°C.

**Note**

This product contains sodium azide: a POISONOUS AND HAZARDOUS SUBSTANCE which should be handled by trained staff only.

## Applications

- Immunohistochemistry (Formalin/PFA-fixed paraffin-embedded sections)

Immunohistochemical staining (Formalin-fixed paraffin-embedded sections) of human placenta with LGALS13 monoclonal antibody, clone PP13/1162 (Cat # MAB14550).

- Immunofluorescence
- Flow Cytometry

## Gene Info — LGALS13

**Entrez GeneID**[29124](#)**Protein Accession#**[Q9UHV8](#)**Gene Name**

LGALS13

**Gene Alias**

GAL13, PLAC8, PP13

**Gene Description**

lectin, galactoside-binding, soluble, 13

**Omim ID**[608717](#)**Gene Ontology**[Hyperlink](#)**Gene Summary**

Lysophospholipases are enzymes that act on biological membranes to regulate the multifunctional lysophospholipids. The protein encoded by this gene has lysophospholipase activity. It is composed of two identical subunits which are held together by disulfide bonds. This protein has structural similarity to several members of the beta-galactoside-binding S-type lectin family. [provided by RefSeq]

**Other Designations**

galectin 13|galectin-13|placental protein 13

## Publication Reference

- [Maternal serum placental protein 13 at 11-13 weeks of gestation in preeclampsia.](#)

Akolekar R, Syngelaki A, Beta J, Kocylowski R, Nicolaides KH.

Prenatal Diagnosis 2009 Dec; 29(12):1103.

- [Placental protein 13 as a first trimester screening marker for aneuploidy.](#)

Koster MP, Wortelboer EJ, Cuckle HS, Stoutenbeek P, Visser GH, Schielen PC.

Prenatal Diagnosis 2009 Dec; 29(13):1237.

## Disease

- [Obstetric Labor](#)
- [Pre-Eclampsia](#)