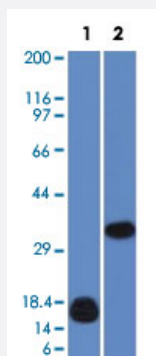


LGALS13 monoclonal antibody, clone PP13/1161

Catalog # MAB14549

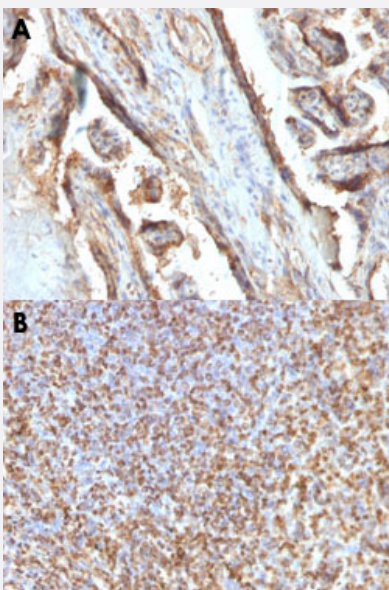
Size 100 ug

Applications



Western Blot

Western Blot analysis of Lane 1: human LGALS13 fragment recombinant protein and Lane 2: K562 cell lysate with LGALS13 monoclonal antibody, clone PP13/1161 (Cat # MAB14549).



Immunohistochemistry (Formalin/PFA-fixed paraffin-embedded sections)

Immunohistochemical staining (Formalin-fixed paraffin-embedded sections) of human placenta (A) and human spleen (B) with LGALS13 monoclonal antibody, clone PP13/1161 (Cat # MAB14549).

Specification

Product Description	Mouse monoclonal antibody raised against partial recombinant human LGALS13.
Immunogen	Recombinant protein corresponding to amino acids 23-134 of human LGALS13.
Host	Mouse

Theoretical MW (kDa)	16, 32
Reactivity	Human
Form	Liquid
Purification	Protein A/G purification
Isotype	IgG2b, kappa
Recommend Usage	Flow Cytometry (0.5-1 ug/10 ⁶ cells) Immunofluorescence (0.5-1 ug/mL) Immunohistochemistry (Formalin/PFA-fixed paraffin-embedded sections) (0.5-1 ug/mL) Western Blotting (0.5-1 ug/mL) The optimal working dilution should be determined by the end user.
Storage Buffer	In 1 mM PBS (0.05% BSA, 0.05% sodium azide).
Storage Instruction	Store at 4°C.
Note	This product contains sodium azide: a POISONOUS AND HAZARDOUS SUBSTANCE which should be handled by trained staff only.

Applications

- Western Blot

Western Blot analysis of Lane 1: human LGALS13 fragment recombinant protein and Lane 2: K562 cell lysate with LGALS13 monoclonal antibody, clone PP13/1161 (Cat # MAB14549).

- Immunohistochemistry (Formalin/PFA-fixed paraffin-embedded sections)

Immunohistochemical staining (Formalin-fixed paraffin-embedded sections) of human placenta (A) and human spleen (B) with LGALS13 monoclonal antibody, clone PP13/1161 (Cat # MAB14549).

- Immunofluorescence

- Flow Cytometry

Gene Info — LGALS13

Entrez GeneID	29124
Protein Accession#	Q9UHV8
Gene Name	LGALS13

Gene Alias	GAL13, PLAC8, PP13
Gene Description	lectin, galactoside-binding, soluble, 13
Omim ID	608717
Gene Ontology	Hyperlink
Gene Summary	Lysophospholipases are enzymes that act on biological membranes to regulate the multifunctional lysophospholipids. The protein encoded by this gene has lysophospholipase activity. It is composed of two identical subunits which are held together by disulfide bonds. This protein has structural similarity to several members of the beta-galactoside-binding S-type lectin family. [provided by RefSeq]
Other Designations	galectin 13 galectin-13 placental protein 13

Publication Reference

- [Maternal serum placental protein 13 at 11-13 weeks of gestation in preeclampsia.](#)

Akolekar R, Syngelaki A, Beta J, Kocylowski R, Nicolaides KH.

Prenatal Diagnosis 2009 Dec; 29(12):1103.

- [Placental protein 13 as a first trimester screening marker for aneuploidy.](#)

Koster MP, Wortelboer EJ, Cuckle HS, Stoutenbeek P, Visser GH, Schielen PC.

Prenatal Diagnosis 2009 Dec; 29(13):1237.

Disease

- [Obstetric Labor](#)
- [Pre-Eclampsia](#)