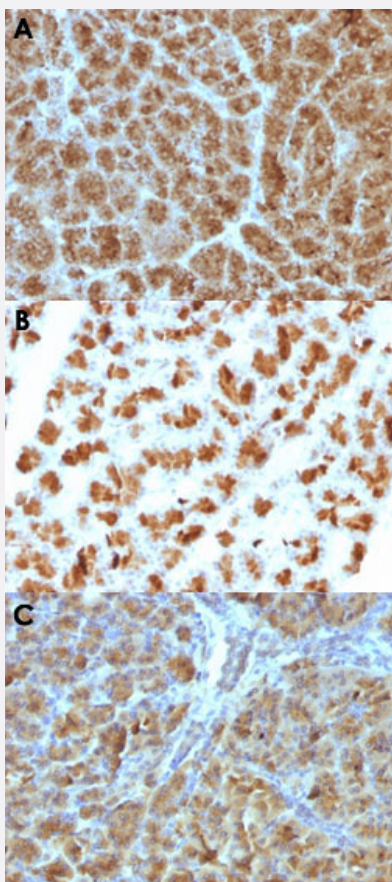


ELA3B monoclonal antibody, clone CELA3B/1257

Catalog # MAB14532 Size 100 ug

Applications



Immunohistochemistry (Formalin/PFA-fixed paraffin-embedded sections)

Immunohistochemical staining (Formalin-fixed paraffin-embedded sections) of human pancreas (A), rat pancreas (B) and mouse pancreas (C) with ELA3B monoclonal antibody, clone CELA3B/1257 (Cat # MAB14532).

Specification

Product Description	Mouse monoclonal antibody raised against partial recombinant human ELA3B.
Immunogen	Recombinant protein corresponding to amino acids 82-238 of human ELA3B.
Host	Mouse
Theoretical MW (kDa)	~17

Reactivity	Human, Mouse, Rat
Form	Liquid
Purification	Protein A/G purification
Isotype	IgG1
Recommend Usage	Flow Cytometry (0.5-1 ug/10 ⁶ cells) Immunofluorescence (0.5-1 ug/mL) Immunohistochemistry (Formalin/PFA-fixed paraffin-embedded sections) (0.5-1 ug/mL) The optimal working dilution should be determined by the end user.
Storage Buffer	In 10 mM PBS (0.05% BSA, 0.05% sodium azide).
Storage Instruction	Store at 4°C.
Note	This product contains sodium azide: a POISONOUS AND HAZARDOUS SUBSTANCE which should be handled by trained staff only.

Applications

- Immunohistochemistry (Formalin/PFA-fixed paraffin-embedded sections)

Immunohistochemical staining (Formalin-fixed paraffin-embedded sections) of human pancreas (A), rat pancreas (B) and mouse pancreas (C) with ELA3B monoclonal antibody, clone CELA3B/1257 (Cat # MAB14532).

- Immunofluorescence

- Flow Cytometry

Gene Info — ELA3B

Entrez GeneID	23436
Protein Accession#	P08861
Gene Name	ELA3B
Gene Alias	-
Gene Description	elastase 3B, pancreatic
Gene Ontology	Hyperlink

Gene Summary

Elastases form a subfamily of serine proteases that hydrolyze many proteins in addition to elastin. Humans have six elastase genes which encode the structurally similar proteins elastase 1, 2, 2A, 2B, 3A, and 3B. Unlike other elastases, elastase 3B has little elastolytic activity. Like most of the human elastases, elastase 3B is secreted from the pancreas as a zymogen and, like other serine proteases such as trypsin, chymotrypsin and kallikrein, it has a digestive function in the intestine. Elastase 3B preferentially cleaves proteins after alanine residues. Elastase 3B may also function in the intestinal transport and metabolism of cholesterol. Both elastase 3A and elastase 3B have been referred to as protease E and as elastase 1, and excretion of this protein in fecal material is frequently used as a measure of pancreatic function in clinical assays. [provided by RefSeq

Other Designations

OTTHUMP00000002837|elastase 1|elastase 3B|protease E

Publication Reference

- [Pancreatic elastase IIIA and its variants are expressed in pancreatic carcinoma cells.](#)

Shimada S, Yamaguchi K, Takahashi M, Ogawa M.

International Journal of Molecular Medicine 2002 Nov; 10(5):599.

- [Molecular cloning of complementary DNA encoding one of the human pancreatic protease E isozymes.](#)

Shirasu Y, Takemura K, Yoshida H, Sato Y, Iijima H, Shimada Y, Mikayama T, Ozawa T, Ikeda N, Ishida A, et al.

Journal of Biochemistry 1988 Aug; 104(2):259.

- [Identification of a novel class of elastase isozyme, human pancreatic elastase III, by cDNA and genomic gene cloning.](#)

Tani T, Ohsumi J, Mita K, Takiguchi Y.

The Journal of Biological Chemistry 1998 Jan; 263(3):1231.