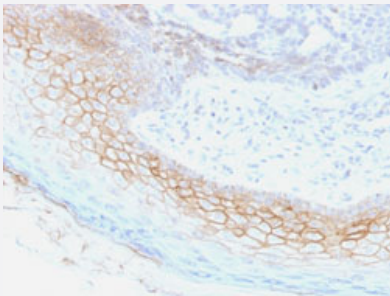


# DSC2/DSC3 monoclonal antibody, clone 7G6

Catalog # MAB14498

Size 100 ug

## Applications



### Immunohistochemistry (Formalin/PFA-fixed paraffin-embedded sections)

Immunohistochemical staining (Formalin-fixed paraffin-embedded sections) of human skin with DSC2/DSC3 monoclonal antibody, clone 7G6 (Cat # MAB14498).

## Specification

**Product Description** Mouse monoclonal antibody raised against partial recombinant human DSC2/DSC3.

**Immunogen** Recombinant protein corresponding to extracellular domain of human DSC2.

**Host** Mouse

**Theoretical MW (kDa)** 110, 100

**Reactivity** Human

**Form** Liquid

**Purification** Protein A/G purification

**Isotype** IgG1, kappa

**Recommend Usage**

- Flow Cytometry (0.5-1 ug/10<sup>6</sup> cells)
- Immunofluorescence (1-2 ug/mL)
- Immunohistochemistry (Formalin/PFA-fixed paraffin-embedded sections) (1-2 ug/mL)
- Western Blotting (0.5-1 ug/mL)
- The optimal working dilution should be determined by the end user.

**Storage Buffer** In 10 mM PBS (0.05% BSA, 0.05% sodium azide).

**Storage Instruction**

Store at 4°C.

**Note**

This product contains sodium azide: a POISONOUS AND HAZARDOUS SUBSTANCE which should be handled by trained staff only.

## Applications

- Western Blot
- Immunohistochemistry (Formalin/PFA-fixed paraffin-embedded sections)  
Immunohistochemical staining (Formalin-fixed paraffin-embedded sections) of human skin with DSC2/DSC3 monoclonal antibody, clone 7G6 (Cat # MAB14498).
- Immunofluorescence
- Flow Cytometry

## Gene Info — DSC2

**Entrez GeneID**[1824](#)**Protein Accession#**[Q02487;Q14574](#)**Gene Name**

DSC2

**Gene Alias**

ARVD11, CDHF2, DG2, DGI/III, DKFZp686I11137, DSC3

**Gene Description**

desmocollin 2

**Omim ID**[125645 610476](#)**Gene Ontology**[Hyperlink](#)**Gene Summary**

The protein encoded by this gene is a calcium-dependent glycoprotein that is a member of the desmocollin subfamily of the cadherin superfamily. These desmosomal family members, along with the desmogleins, are found primarily in epithelial cells where they constitute the adhesive proteins of the desmosome cell-cell junction and are required for cell adhesion and desmosome formation. The desmosomal family members are arranged in two clusters on chromosome 18, occupying less than 650 kb combined. Mutations in this gene are associated with arrhythmogenic right ventricular dysplasia-11. Alternative splicing results in two transcript variants encoding distinct isoforms. [provided by RefSeq]

**Other Designations**

desmosomal glycoprotein II/III

## Gene Info — DSC3

Entrez GeneID [1825](#)

Protein Accession# [Q02487;Q14574](#)

Gene Name DSC3

Gene Alias CDHF3, DSC, DSC1, DSC2, DSC4, HT-CP

Gene Description desmocollin 3

Omim ID [600271](#)

Gene Ontology [Hyperlink](#)

**Gene Summary**

The protein encoded by this gene is a calcium-dependent glycoprotein that is a member of the desmocollin subfamily of the cadherin superfamily. These desmosomal family members, along with the desmogleins, are found primarily in epithelial cells where they constitute the adhesive proteins of the desmosome cell-cell junction and are required for cell adhesion and desmosome formation. The desmosomal family members are arranged in two clusters on chromosome 18, occupying less than 650 kb combined. Alternative splicing results in two transcript variants encoding distinct isoforms. [provided by RefSeq]

**Other Designations** desmocollin 4

## Publication Reference

- [Nomenclature of the desmosomal cadherins.](#)

Buxton RS, Cowin P, Franke WW, Garrod DR, Green KJ, King IA, Koch PJ, Magee AI, Rees DA, Stanley JR, et al.  
The Journal of Cell Biology 1993 May; 121(3):481.

## Pathway

- [Arrhythmogenic right ventricular cardiomyopathy \(ARVC\)](#)

## Disease

- [Arrhythmias](#)
- [Arrhythmogenic Right Ventricular Dysplasia](#)
- [Cardiomyopathy](#)

- [Genetic Predisposition to Disease](#)
- [Genetic Predisposition to Disease](#)
- [Ovarian Neoplasms](#)
- [Tobacco Use Disorder](#)