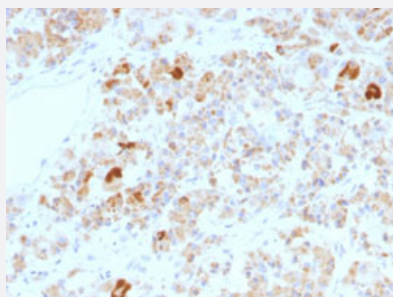


LH, alpha monoclonal antibody, clone LHa/756

Catalog # MAB14477 Size 100 ug

Applications



Immunohistochemistry (Formalin/PFA-fixed paraffin-embedded sections)

Immunohistochemical staining (Formalin-fixed paraffin-embedded sections) of human pituitary gland with LH, alpha monoclonal antibody, clone LHa/756 (Cat # MAB14477).

Specification

Product Description	Mouse monoclonal antibody raised against full length recombinant human LH, alpha.
Immunogen	Recombinant protein corresponding to full length human LH, alpha.
Host	Mouse
Theoretical MW (kDa)	~13
Reactivity	Human
Form	Liquid
Purification	Protein A/G purification
Isotype	IgG1, kappa
Recommend Usage	Immunohistochemistry (Formalin/PFA-fixed paraffin-embedded sections) (1-2 ug/mL) The optimal working dilution should be determined by the end user.
Storage Buffer	In 10 mM PBS (0.05% BSA, 0.05% sodium azide).
Storage Instruction	Store at 4°C.

Note

This product contains sodium azide: a POISONOUS AND HAZARDOUS SUBSTANCE which should be handled by trained staff only.

Applications

- Immunohistochemistry (Formalin/PFA-fixed paraffin-embedded sections)

Immunohistochemical staining (Formalin-fixed paraffin-embedded sections) of human pituitary gland with LH, alpha monoclonal antibody, clone LHa/756 (Cat # MAB14477).

Publication Reference

- [The control of gonadotrophin secretion by ovarian steroids.](#)

Couzinet B, Schaison G.

Human Reproduction 1993 Nov; 8 Suppl 2:97.