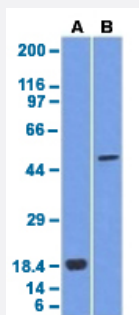


SOX10 monoclonal antibody, clone SOX10/1074

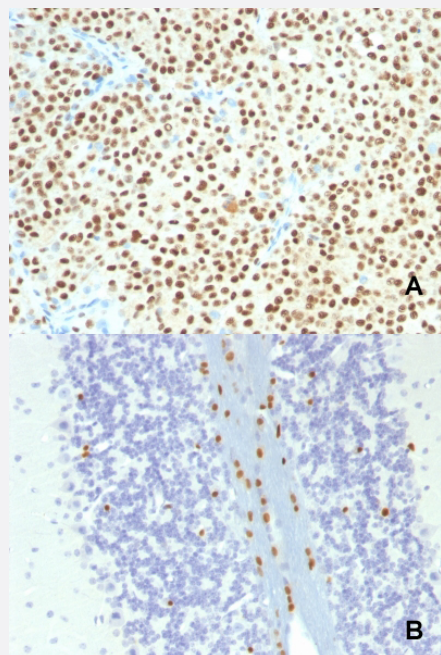
Catalog # MAB14443 Size 100 ug

Applications



Western Blot

Western blot analysis of Lane 1: recombinant protein, Lane 2: A375 cell lysates with SOX10 monoclonal antibody, clone SOX10/1074 (Cat # MAB14443).



Immunohistochemistry (Formalin/PFA-fixed paraffin-embedded sections)

Immunohistochemical staining (Formalin-fixed paraffin-embedded sections) of (A) human melanoma and (B) mouse brain with SOX10 monoclonal antibody, clone SOX10/1074 (Cat # MAB14443).

Specification

Product Description

Mouse monoclonal antibody raised against partial recombinant human SOX10.

Immunogen

Recombinant protein corresponding to amino acids 115-269 of human SOX10.

Host	Mouse
Theoretical MW (kDa)	49-58
Reactivity	Human, Mouse
Specificity	Recognizes a protein of ~55kDa, identified as SOX10. This antibody is highly specific and does not cross-react with other members of the SOX-family.
Form	Liquid
Purification	Protein A/G purification
Isotype	IgG2b, kappa
Recommend Usage	Flow Cytometry (0.5-1 ug/million cells) Immunofluorescence (1-2 ug/mL) Immunohistochemistry (Formalin/PFA-fixed paraffin-embedded sections) (0.5-1 ug/mL) Western Blot (0.5-1 ug/mL) The optimal working dilution should be determined by the end user.
Storage Buffer	In 10 mM PBS (0.05% BSA and 0.05% azide).
Storage Instruction	Store at 4°C.
Note	This product contains sodium azide: a POISONOUS AND HAZARDOUS SUBSTANCE which should be handled by trained staff only.

Applications

- Western Blot

Western blot analysis of Lane 1: recombinant protein, Lane 2: A375 cell lysates with SOX10 monoclonal antibody, clone SOX10/1074 (Cat # MAB14443).

- Immunohistochemistry (Formalin/PFA-fixed paraffin-embedded sections)

Immunohistochemical staining (Formalin-fixed paraffin-embedded sections) of (A) human melanoma and (B) mouse brain with SOX10 monoclonal antibody, clone SOX10/1074 (Cat # MAB14443).

- Immunofluorescence

- Flow Cytometry

Gene Info — SOX10

Entrez GeneID	6663
Protein Accession#	P56693
Gene Name	SOX10
Gene Alias	DOM, MGC15649, WS2E, WS4
Gene Description	SRY (sex determining region Y)-box 10
Omim ID	277580 601706 602229 609136
Gene Ontology	Hyperlink
Gene Summary	This gene encodes a member of the SOX (SRY-related HMG-box) family of transcription factors involved in the regulation of embryonic development and in the determination of the cell fate. The encoded protein may act as a transcriptional activator after forming a protein complex with other proteins. This protein acts as a nucleocytoplasmic shuttle protein and is important for neural crest and peripheral nervous system development. Mutations in this gene are associated with Waardenburg-Shah and Waardenburg-Hirschsprung disease. [provided by RefSeq]
Other Designations	OTTHUMP00000028515 OTTHUMP00000195094 SRY-related HMG-box gene 10 dominant megaloblastosis, mouse, human homolog of

Publication Reference

- [SOX10 Expression in malignant melanoma, carcinoma, and normal tissues.](#)

Mohamed A, Gonzalez RS, Lawson D, Wang J, Cohen C.

Applied Immunohistochemistry & Molecular Morphology 2013 Dec; 21(6):506.

Disease

- [Genetic Predisposition to Disease](#)
- [Hirschsprung Disease](#)
- [Kidney Failure](#)
- [Malignant melanoma](#)
- [Melanoma](#)
- [Neoplasm Metastasis](#)
- [Schizophrenia](#)

- [Skin Neoplasms](#)