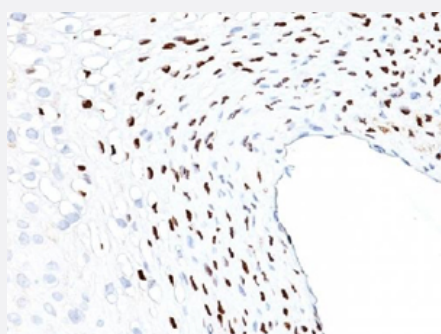


Human Papilloma Virus 16 monoclonal antibody, clone HPV16L1/1058

Catalog # MAB14430 Size 100 ug

Applications



Immunohistochemistry (Formalin/PFA-fixed paraffin-embedded sections)

Immunohistochemical staining (Formalin-fixed paraffin-embedded sections) of human uterine cervix with Human papilloma virus 16 monoclonal antibody, clone HPV16L1/1058 (Cat # MAB14430).

Specification

Product Description	Mouse monoclonal antibody raised against human papilloma virus 16 (HPV-16).
Immunogen	HPV-16, major capsid protein L1.
Host	Mouse
Specificity	Reacts with a protein of 57kDa which identified as the L1 protein of HPV-16. It is the major capsid protein of HPV-16. The antibody reacts with HPV-16, 33 and 37.
Form	Liquid
Purification	Protein A/G purification
Isotype	IgG2a, kappa
Recommend Usage	Immunofluorescence (0.5-1 ug/mL) Immunohistochemistry (Formalin/PFA-fixed paraffin-embedded sections) (0.5-1 ug/mL) Immunoprecipitation (0.5-1 ug/500 ug protein Lysate) Western Blotting (0.5-1 ug/mL) The optimal working dilution should be determined by the end user.

Storage Buffer	In 10 mM PBS (0.05% BSA and 0.05% azide).
Storage Instruction	Store at 4°C.
Note	This product contains sodium azide: a POISONOUS AND HAZARDOUS SUBSTANCE which should be handled by trained staff only.

Applications

- Western Blot
- Immunohistochemistry (Formalin/PFA-fixed paraffin-embedded sections)

Immunohistochemical staining (Formalin-fixed paraffin-embedded sections) of human uterine cervix with Human papilloma virus 16 monoclonal antibody, clone HPV16L1/1058 (Cat # MAB14430).

- Immunofluorescence
- Immunoprecipitation

Publication Reference

- [Production and characterisation of a monoclonal antibody to human papillomavirus type 16 using recombinant vaccinia virus.](#)

McLean CS, Churcher MJ, Meinke J, Smith GL, Higgins G, Stanley M, Minson AC.

Journal of Clinical Pathology 1990 Jun; 43(6):488.

Application: ELISA, ICC, IF, IHC-P, WB-Tr, Hamster, Human, Monkey, BHK, CV-1 cells, Human cervical biopsy specimens