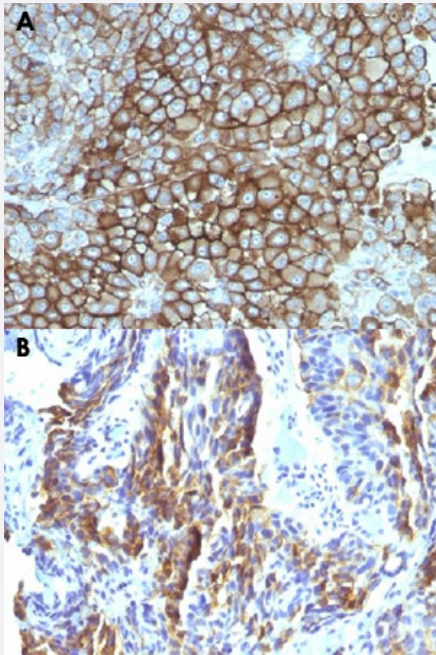


Melanoma monoclonal antibody, clone KBA.62

Catalog # MAB14429 Size 100 ug

Applications



Immunohistochemistry (Formalin/PFA-fixed paraffin-embedded sections)

Immunohistochemical staining (Formalin-fixed paraffin-embedded sections) of (A) human melanoma and (B) human tongue with Melanoma monoclonal antibody, clone KBA.62 (Cat # MAB14429).

Specification

Product Description	Mouse monoclonal antibody raised against human melanoma.
Immunogen	Human KAL cells derived from lymph node metastasis of malignant melanoma.
Host	Mouse
Reactivity	Human
Specificity	Reacts positively against melanocytic tumors but not other tumors.
Form	Liquid
Purification	Protein A/G purification

Isotype	IgG1, kappa
Recommend Usage	Immunofluorescence (0.5-1 ug/mL) Immunohistochemistry (Formalin/PFA-fixed paraffin-embedded sections) (0.5-1 ug/mL) The optimal working dilution should be determined by the end user.
Storage Buffer	In 10 mM PBS (0.05% BSA and 0.05% azide).
Storage Instruction	Store at 4°C.
Note	This product contains sodium azide: a POISONOUS AND HAZARDOUS SUBSTANCE which should be handled by trained staff only.

Applications

- Immunohistochemistry (Formalin/PFA-fixed paraffin-embedded sections)

Immunohistochemical staining (Formalin-fixed paraffin-embedded sections) of (A) human melanoma and (B) human tongue with Melanoma monoclonal antibody, clone KBA.62 (Cat # MAB14429).

- Immunofluorescence

Publication Reference

- [KBA.62: a useful marker for primary and metastatic melanomas.](#)

Pagès C, Rochaix P, al Saati T, Valmary-Degano S, Boulinguez S, Launay F, Carle P, Lauwers F, Payoux P, Le Guellec S, Brousset P, Lamant L.

Human Pathology 2008 Aug; 39(8):1136.

Application: IHC-P, Human, Human metastatic melanomas

- [Production and characterisation of an antimelanoma monoclonal antibody KBA.62 using a new melanoma cell line reactive on paraffin wax embedded sections.](#)

Cohen-Knafo E, al Saati T, Aziza J, Ralfkiaer E, Selves J, Gorguet B, Delsol G.

Journal of Clinical Pathology 1995 Sep; 48(9):826.

Application: IHC-P, WB-Ce, Human, Mouse, KAL cells, Melanoma