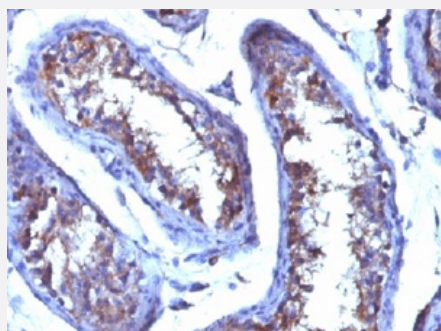


# Testosterone monoclonal antibody, clone 4E1G2

Catalog # MAB14425      Size 100 ug

## Applications



### Immunohistochemistry (Formalin/PFA-fixed paraffin-embedded sections)

Immunohistochemical staining (Formalin-fixed paraffin-embedded sections) of human testicular carcinoma with Testosterone monoclonal antibody, clone 4E1G2 (Cat # MAB14425).

## Specification

**Product Description** Mouse monoclonal antibody raised against human testosterone.

**Immunogen** Testosterone-3-carboxy-methyl-oxime conjugated to BSA.

**Host** Mouse

**Specificity**

- Reacts with testosterone 100%
- 11-beta-hydroxy testosterone 3.3%
- 17-alpha-methyl testosterone <0.1%
- 5-alpha DHT 0.8%
- estradiol <0.1%
- progesterone <0.1%

**Form** Liquid

**Purification** Protein A/G purification

**Isotype** IgG1, kappa

**Recommend Usage**

- ELISA
- Immunohistochemistry (Formalin/PFA-fixed paraffin-embedded sections) (0.25-0.5 ug/mL)
- Radioimmunoassay
- The optimal working dilution should be determined by the end user.

<b>Storage Buffer</b>	In 10 mM PBS (0.05% BSA and 0.05% azide).
<b>Storage Instruction</b>	Store at 4°C.
<b>Note</b>	This product contains sodium azide: a POISONOUS AND HAZARDOUS SUBSTANCE which should be handled by trained staff only.

## Applications

- Immunohistochemistry (Formalin/PFA-fixed paraffin-embedded sections)

Immunohistochemical staining (Formalin-fixed paraffin-embedded sections) of human testicular carcinoma with Testosterone monoclonal antibody, clone 4E1G2 (Cat # MAB14425).

- Enzyme-linked Immunoabsorbent Assay
- Radioimmunoassay

## Publication Reference

- [Characterisation of monoclonal antibodies raised against testosterone.](#)

Fantl VE, Wang DY.

Journal of Steroid Biochemistry 1983 Nov; 19(5):1605.

Application: RIA, Human, Myeloma cell line P3/Nsl-Ag4-1 cells