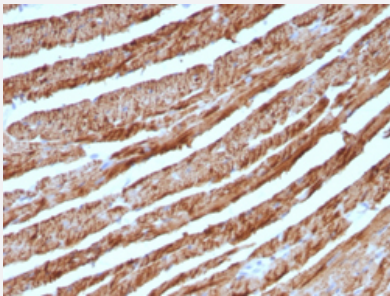


CYCS monoclonal antibody, clone CTC05

Catalog # MAB14393 Size 100 ug

Applications



Immunohistochemistry (Formalin/PFA-fixed paraffin-embedded sections)

Immunohistochemical staining (Formalin-fixed paraffin-embedded sections) of human heart with CYCS monoclonal antibody, clone CTC05 (Cat # MAB14393).

Specification

Product Description	Mouse monoclonal antibody raised against full length recombinant human CYCS.
Immunogen	Recombinant protein corresponding to full length human CYCS.
Host	Mouse
Theoretical MW (kDa)	15
Reactivity	Human
Form	Liquid
Purification	Protein A/G purification
Isotype	IgG2b, kappa
Recommend Usage	Flow Cytometry (0.5-1 ug/10 ⁶ cells in 0.1 mL) Immunofluorescence (0.5-1 ug/mL) Immunohistochemistry (Formalin/PFA-fixed paraffin-embedded sections) (0.25-0.5 ug/mL) Western Blot (0.5-1 ug/mL) The optimal working dilution should be determined by the end user.
Storage Buffer	In 1 mM PBS (0.05% BSA, 0.05% sodium azide).

Storage Instruction

Store at 4°C.

Note

This product contains sodium azide: a POISONOUS AND HAZARDOUS SUBSTANCE which should be handled by trained staff only.

Applications

- Western Blot
- Immunohistochemistry (Formalin/PFA-fixed paraffin-embedded sections)
Immunohistochemical staining (Formalin-fixed paraffin-embedded sections) of human heart with CYCS monoclonal antibody, clone CTC05 (Cat # MAB14393).
- Immunofluorescence
- Flow Cytometry

Gene Info — CYCS

Entrez GeneID [54205](#)**Protein Accession#** [P99999](#)**Gene Name** CYCS**Gene Alias** CYC, HCS**Gene Description** cytochrome c, somatic**Omim ID** [123970](#)**Gene Ontology** [Hyperlink](#)

Gene Summary This gene encodes cytochrome c, a component of the electron transport chain in mitochondria. The heme group of cytochrome c accepts electrons from the b-c1 complex and transfers electrons to the cytochrome oxidase complex. Cytochrome c is also involved in initiation of apoptosis. Upon release of cytochrome c to the cytoplasm, the protein binds apoptotic protease activating factor which activates the apoptotic initiator procaspase 9. Many cytochrome c pseudogenes exist, scattered throughout the human genome. [provided by RefSeq]

Other Designations cytochrome c

Pathway

- [Amyotrophic lateral sclerosis \(ALS\)](#)
- [Apoptosis](#)
- [Colorectal cancer](#)
- [p53 signaling pathway](#)
- [Pathways in cancer](#)
- [Small cell lung cancer](#)

Disease

- [Thrombocytopenia](#)