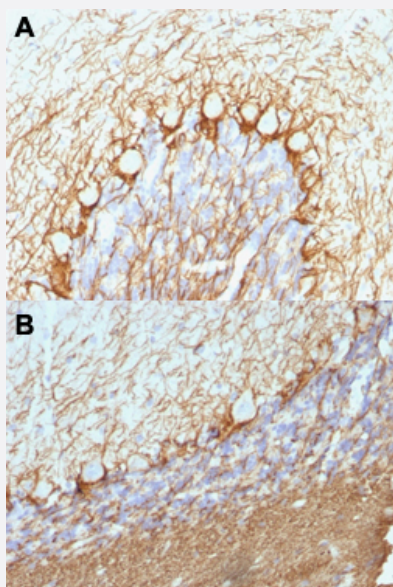


NEFH (phospho KSP/KEP) monoclonal antibody, clone NE14

Catalog # MAB14381 Size 100 ug

Applications



Immunohistochemistry (Formalin/PFA-fixed paraffin-embedded sections)

Immunohistochemical staining (Formalin-fixed paraffin-embedded sections) of human cerebellum (A) and rat cerebellum (B) with NEFH (phospho KSP/KEP) monoclonal antibody, clone NE14 (Cat # MAB14381).

Specification

Product Description	Mouse monoclonal antibody raised against native pig NEFH.
Immunogen	Crude neurofilament preparation from porcine spinal cord.
Host	Mouse
Theoretical MW (kDa)	200
Reactivity	Human, Pig, Rat
Specificity	This monoclonal antibody identified as heavy subunit of neurofilaments (NEFH). It reacts specifically with the phosphorylated KSP/KEP segment at the C-terminus of the heavy subunit of neurofilaments. After dephosphorylation of neurofilaments with alkaline phosphatase, this antibody no longer binds.
Form	Liquid

Purification	Protein A/G purification
Isotype	IgG1
Recommend Usage	Flow Cytometry (0.5-1 ug/10 ⁶ cells in 0.1 mL) Immunohistochemistry (Formalin/PFA-fixed paraffin-embedded sections) (0.25-0.5 ug/mL) The optimal working dilution should be determined by the end user.
Storage Buffer	In 10 mM PBS (0.05% BSA, 0.05% sodium azide).
Storage Instruction	Store at 4°C.
Note	This product contains sodium azide: a POISONOUS AND HAZARDOUS SUBSTANCE which should be handled by trained staff only.

Applications

- Immunohistochemistry (Formalin/PFA-fixed paraffin-embedded sections)
Immunohistochemical staining (Formalin-fixed paraffin-embedded sections) of human cerebellum (A) and rat cerebellum (B) with NEFH (phospho KSP/KEP) monoclonal antibody, clone NE14 (Cat # MAB14381).
- Flow Cytometry