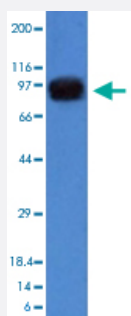


NCL monoclonal antibody, clone NCL/902

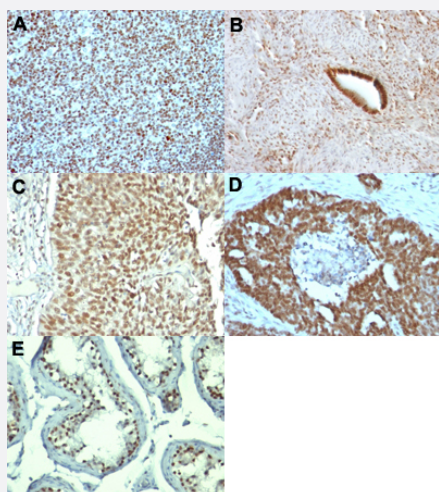
Catalog # MAB14379 Size 100 ug

Applications



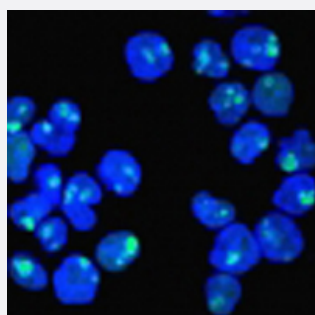
Western Blot (Cell lysate)

Western Blot analysis of A431 cell lysate with NCL monoclonal antibody, clone NCL/902 (Cat # MAB14379).



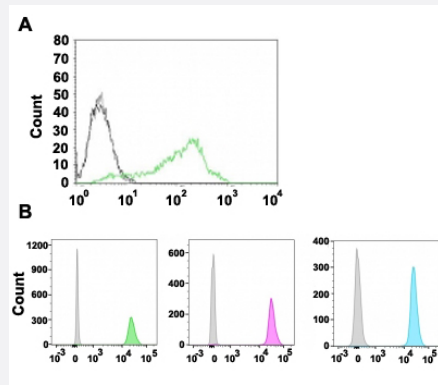
Immunohistochemistry (Formalin/PFA-fixed paraffin-embedded sections)

Immunohistochemical staining (Formalin-fixed paraffin-embedded sections) of human tonsil (A), human skin (B), human uterus (C), human bladder carcinoma (D) and human ovarian carcinoma (E) with NCL monoclonal antibody, clone NCL/902 (Cat # MAB14379).



Immunofluorescence

Immunofluorescent staining of HeLa cells with NCL monoclonal antibody, clone NCL/902 (Cat # MAB14379) (Green). Blue: nuclei.



Flow Cytometry

Flow cytometric analysis of 293T cells (A) and Jurkat cells (B) with NCL monoclonal antibody, clone NCL/902 (Cat # MAB14379). A: Cells alone was black; isotype control was grey and AF488 conjugated format of NCL monoclonal antibody, clone NCL/902 was green. B: isotype control was grey; FITC conjugated format was green; APC conjugated format was purple and AF700 conjugated format of NCL monoclonal antibody, clone NCL/902 was turquoise.

Specification

Product Description	Mouse monoclonal antibody raised against full length recombinant human NCL.
Immunogen	Recombinant protein corresponding to full length human NCL.
Host	Mouse
Theoretical MW (kDa)	76
Reactivity	Human
Form	Liquid
Purification	Protein A/G purification
Isotype	IgG1, kappa
Recommend Usage	Flow Cytometry (0.5-1 ug/10 ⁶ cells in 0.1 mL) Immunofluorescence (0.5-1 ug/mL) Immunohistochemistry (Formalin/PFA-fixed paraffin-embedded sections) (0.5-1 ug/mL) Western Blot (0.5-1 ug/mL) The optimal working dilution should be determined by the end user.
Storage Buffer	In 10 mM PBS (0.05% BSA, 0.05% sodium azide).
Storage Instruction	Store at 4°C.
Note	This product contains sodium azide: a POISONOUS AND HAZARDOUS SUBSTANCE which should be handled by trained staff only.

Applications

- Western Blot (Cell lysate)

Western Blot analysis of A431 cell lysate with NCL monoclonal antibody, clone NCL/902 (Cat # MAB14379).

- Immunohistochemistry (Formalin/PFA-fixed paraffin-embedded sections)

Immunohistochemical staining (Formalin-fixed paraffin-embedded sections) of human tonsil (A), human skin (B), human uterus (C), human bladder carcinoma (D) and human ovarian carcinoma (E) with NCL monoclonal antibody, clone NCL/902 (Cat # MAB14379).

- Immunofluorescence

Immunofluorescent staining of HeLa cells with NCL monoclonal antibody, clone NCL/902 (Cat # MAB14379) (Green). Blue: nuclei.

- Flow Cytometry

Flow cytometric analysis of 293T cells (A) and Jurkat cells (B) with NCL monoclonal antibody, clone NCL/902 (Cat # MAB14379). A: Cells alone was black; isotype control was grey and AF488 conjugated format of NCL monoclonal antibody, clone NCL/902 was green. B: isotype control was grey; FITC conjugated format was green; APC conjugated format was purple and AF700 conjugated format of NCL monoclonal antibody, clone NCL/902 was turquoise.

Gene Info — NCL

Entrez GeneID [4691](#)

Protein Accession# [P19338](#)

Gene Name NCL

Gene Alias C23, FLJ45706

Gene Description nucleolin

Omim ID [164035](#)

Gene Ontology [Hyperlink](#)

Gene Summary Nucleolin (NCL), a eukaryotic nucleolar phosphoprotein, is involved in the synthesis and maturation of ribosomes. It is located mainly in dense fibrillar regions of the nucleolus. Human NCL gene consists of 14 exons with 13 introns and spans approximately 11kb. The intron 11 of the NCL gene encodes a small nucleolar RNA, termed U20. [provided by RefSeq]

Other Designations -

Pathway

- [Pathogenic Escherichia coli infection - EHEC](#)