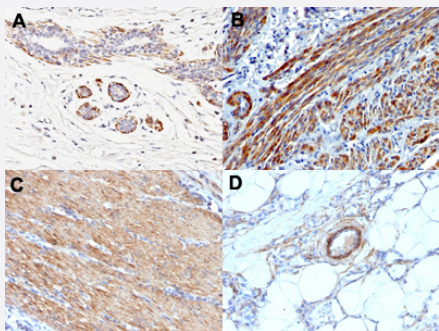


MYH11 monoclonal antibody, clone MYH11/923

Catalog # MAB14377 Size 100 ug

Applications



Immunohistochemistry (Formalin/PFA-fixed paraffin-embedded sections)

Immunohistochemical staining (Formalin-fixed paraffin-embedded sections) of human breast carcinoma (A), human leiomyosarcoma (B), human colon carcinoma (C) and human angiosarcoma (D) with MYH11 monoclonal antibody, clone MYH11/923 (Cat # MAB14377).

Specification

Product Description	Mouse monoclonal antibody raised against full length recombinant human MYH11.
Immunogen	Recombinant protein corresponding to full length human MYH11.
Host	Mouse
Theoretical MW (kDa)	205, 200
Reactivity	Human
Form	Liquid
Purification	Protein A/G purification
Isotype	IgG1, kappa
Recommend Usage	Flow Cytometry (0.5-1 ug/10 ⁶ cells in 0.1 mL) Immunofluorescence (0.5-1 ug/mL) Immunohistochemistry (Formalin/PFA-fixed paraffin-embedded sections) (0.5-1 ug/mL) The optimal working dilution should be determined by the end user.
Storage Buffer	In 10 mM PBS (0.05% BSA, 0.05% sodium azide).

Storage Instruction

Store at 4°C.

Note

This product contains sodium azide: a POISONOUS AND HAZARDOUS SUBSTANCE which should be handled by trained staff only.

Applications

- Immunohistochemistry (Formalin/PFA-fixed paraffin-embedded sections)

Immunohistochemical staining (Formalin-fixed paraffin-embedded sections) of human breast carcinoma (A), human leiomyosarcoma (B), human colon carcinoma (C) and human angiosarcoma (D) with MYH11 monoclonal antibody, clone MYH11/923 (Cat # MAB14377).

- Immunofluorescence

- Flow Cytometry

Gene Info — MYH11

Entrez GeneID

[4629](#)

Protein Accession#

[P35749](#)

Gene Name

MYH11

Gene Alias

AAT4, DKFZp686D10126, DKFZp686D19237, FAA4, FLJ35232, MGC126726, MGC32963, S MHC, SMMHC

Gene Description

myosin, heavy chain 11, smooth muscle

Omim ID

[132900](#) [160745](#)

Gene Ontology

[Hyperlink](#)

Gene Summary

The protein encoded by this gene is a smooth muscle myosin belonging to the myosin heavy chain family. The gene product is a subunit of a hexameric protein that consists of two heavy chain subunits and two pairs of non-identical light chain subunits. It functions as a major contractile protein, converting chemical energy into mechanical energy through the hydrolysis of ATP. The gene encoding a human ortholog of rat NUDE1 is transcribed from the reverse strand of this gene, and its 3' end overlaps with that of the latter. The pericentric inversion of chromosome 16 [inv(16)(p13q22)] produces a chimeric transcript that encodes a protein consisting of the first 165 residues from the N terminus of core-binding factor beta in a fusion with the C-terminal portion of the smooth muscle myosin heavy chain. This chromosomal rearrangement is associated with acute myeloid leukemia of the M4Eo subtype. Alternative splicing generates isoforms that are differentially expressed, with ratios changing during muscle cell maturation. Alternatively spliced transcript variants encoding different isoforms have been identified. [provided by RefSeq]

Other Designations

myosin, heavy polypeptide 11, smooth muscle|smooth muscle myosin heavy chain 11

Pathway

- [Tight junction](#)
- [Vascular smooth muscle contraction](#)

Disease

- [Adenocarcinoma](#)
- [Breast cancer](#)
- [Breast Neoplasms](#)
- [Ductus Arteriosus](#)
- [Genetic Predisposition to Disease](#)
- [Leukemia](#)
- [Prostate cancer](#)
- [Prostatic Neoplasms](#)