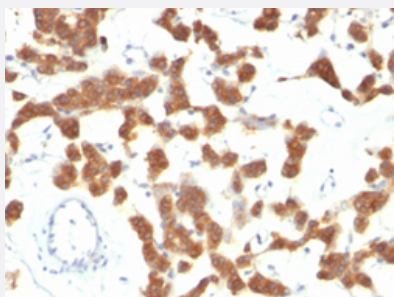


KRT18 monoclonal antibody, clone B23.1

Catalog # MAB14344 Size 100 ug

Applications



Immunohistochemistry (Formalin/PFA-fixed paraffin-embedded sections)

Immunohistochemical staining (Formalin-fixed paraffin-embedded sections) of human thyroid carcinoma with KRT18 monoclonal antibody, clone B23.1 (Cat # MAB14344).

Specification

Product Description	Mouse monoclonal antibody raised against native human KRT18.
Immunogen	PMC-42 human breast carcinoma cells.
Host	Mouse
Theoretical MW (kDa)	45
Reactivity	Human
Form	Liquid
Purification	Protein A/G purification
Isotype	IgG1
Recommend Usage	Flow Cytometry (0.5-1 ug/10 ⁶ cells in 0.1 mL) Immunofluorescence (1-2 ug/mL) Immunohistochemistry (Formalin/PFA-fixed paraffin-embedded sections) (0.5-1 ug/mL) Western Blot (0.5-1 ug/mL) The optimal working dilution should be determined by the end user.
Storage Buffer	In 10 mM PBS.

Storage Instruction

Store at -20 to -80°C.
Aliquot to avoid repeated freezing and thawing.

Applications

- Western Blot
- Immunohistochemistry (Formalin/PFA-fixed paraffin-embedded sections)

Immunohistochemical staining (Formalin-fixed paraffin-embedded sections) of human thyroid carcinoma with KRT18 monoclonal antibody, clone B23.1 (Cat # MAB14344).

- Immunofluorescence
- Flow Cytometry

Gene Info — KRT18

Entrez GeneID [3875](#)

Protein Accession# [P05783](#)

Gene Name KRT18

Gene Alias CYK18, K18

Gene Description keratin 18

Omim ID [148070](#) [215600](#)

Gene Ontology [Hyperlink](#)

Gene Summary KRT18 encodes the type I intermediate filament chain keratin 18. Keratin 18, together with its filament partner keratin 8, are perhaps the most commonly found members of the intermediate filament gene family. They are expressed in single layer epithelial tissues of the body. Mutations in this gene have been linked to cryptogenic cirrhosis. Two transcript variants encoding the same protein have been found for this gene. [provided by RefSeq]

Other Designations cell proliferation-inducing protein 46|cytokeratin 18

Pathway

- [Pathogenic Escherichia coli infection - EHEC](#)

Disease

- [Cleft Lip](#)
- [Cleft Palate](#)
- [Drug-Induced Liver Injury](#)
- [Genetic Predisposition to Disease](#)
- [Liver Cirrhosis](#)
- [Liver Failure](#)