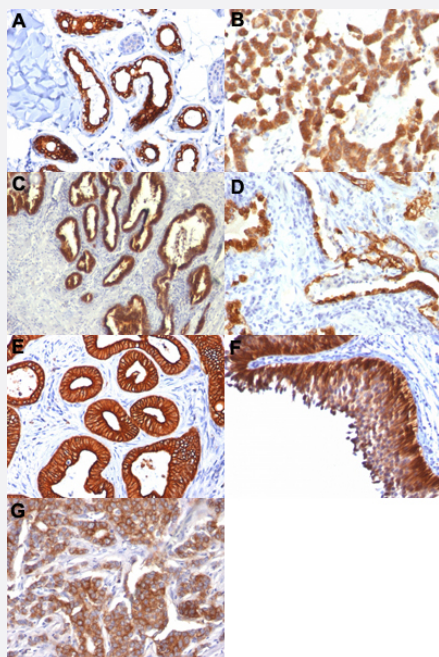


KRT18 monoclonal antibody, clone KRT18/834

Catalog # MAB14336 Size 100 ug

Applications



Immunohistochemistry (Formalin/PFA-fixed paraffin-embedded sections)

Immunohistochemical staining (Formalin-fixed paraffin-embedded sections) of human skin (A), human thyroid carcinoma (B), human prostate carcinoma (C), human lung carcinoma (D), human colon carcinoma (E), human bladder carcinoma (F) and human breast carcinoma (G) with KRT18 monoclonal antibody, clone KRT18/834 (Cat # MAB14336).

Specification

Product Description	Mouse monoclonal antibody raised against full length recombinant human KRT18.
Immunogen	Recombinant protein corresponding to full length human KRT18.
Host	Mouse
Theoretical MW (kDa)	45
Reactivity	Human
Form	Liquid
Purification	Protein A/G purification

Isotype	IgG1
Recommend Usage	Flow Cytometry (0.5-1 ug/10 ⁶ cells in 0.1 mL) Immunofluorescence (1-2 ug/mL) Immunohistochemistry (Formalin/PFA-fixed paraffin-embedded sections) (0.5-1 ug/mL) The optimal working dilution should be determined by the end user.
Storage Buffer	In 10 mM PBS.
Storage Instruction	Store at -20 to -80°C. Aliquot to avoid repeated freezing and thawing.

Applications

- Immunohistochemistry (Formalin/PFA-fixed paraffin-embedded sections)

Immunohistochemical staining (Formalin-fixed paraffin-embedded sections) of human skin (A), human thyroid carcinoma (B), human prostate carcinoma (C), human lung carcinoma (D), human colon carcinoma (E), human bladder carcinoma (F) and human breast carcinoma (G) with KRT18 monoclonal antibody, clone KRT18/834 (Cat # MAB14336).

- Immunofluorescence
- Flow Cytometry

Gene Info — KRT18

Entrez GeneID	3875
Protein Accession#	P05783
Gene Name	KRT18
Gene Alias	CYK18, K18
Gene Description	keratin 18
Omim ID	148070 215600
Gene Ontology	Hyperlink
Gene Summary	KRT18 encodes the type I intermediate filament chain keratin 18. Keratin 18, together with its filament partner keratin 8, are perhaps the most commonly found members of the intermediate filament gene family. They are expressed in single layer epithelial tissues of the body. Mutations in this gene have been linked to cryptogenic cirrhosis. Two transcript variants encoding the same protein have been found for this gene. [provided by RefSeq]

Other Designations

cell proliferation-inducing protein 46|cytokeratin 18

Pathway

- [Pathogenic Escherichia coli infection - EHEC](#)

Disease

- [Cleft Lip](#)
- [Cleft Palate](#)
- [Drug-Induced Liver Injury](#)
- [Genetic Predisposition to Disease](#)
- [Liver Cirrhosis](#)
- [Liver Failure](#)