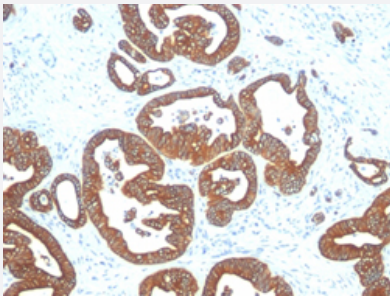


# KRT18 monoclonal antibody, clone DE-K18

Catalog # MAB14333      Size 100 ug

## Applications



### Immunohistochemistry (Formalin/PFA-fixed paraffin-embedded sections)

Immunohistochemical staining (Formalin-fixed paraffin-embedded sections) of human colon carcinoma with KRT18 monoclonal antibody, clone DE-K18 (Cat # MAB14333).

## Specification

Product Description	Mouse monoclonal antibody raised against native human KRT18.
Immunogen	Cytoskeletal preparation extracted from the human vulvar squamous carcinoma cell line A431.
Host	Mouse
Theoretical MW (kDa)	45
Reactivity	Human
Form	Liquid
Purification	Protein A/G purification
Isotype	IgG1, kappa
Recommend Usage	Flow Cytometry (0.5-1 ug/10 <sup>6</sup> cells in 0.1 mL) Immunofluorescence (1-2 ug/mL) Immunohistochemistry (Formalin/PFA-fixed paraffin-embedded sections) (2-4 ug/mL) The optimal working dilution should be determined by the end user.
Storage Buffer	In 10 mM PBS (0.05% BSA, 0.05% sodium azide).

**Storage Instruction**

Store at 4°C.

**Note**

This product contains sodium azide: a POISONOUS AND HAZARDOUS SUBSTANCE which should be handled by trained staff only.

## Applications

- Immunohistochemistry (Formalin/PFA-fixed paraffin-embedded sections)

Immunohistochemical staining (Formalin-fixed paraffin-embedded sections) of human colon carcinoma with KRT18 monoclonal antibody, clone DE-K18 (Cat # MAB14333).

- Immunofluorescence

- Flow Cytometry

## Gene Info — KRT18

**Entrez GeneID**[3875](#)**Protein Accession#**[P05783](#)**Gene Name**

KRT18

**Gene Alias**

CYK18, K18

**Gene Description**

keratin 18

**Omim ID**[148070 215600](#)**Gene Ontology**[Hyperlink](#)**Gene Summary**

KRT18 encodes the type I intermediate filament chain keratin 18. Keratin 18, together with its filament partner keratin 8, are perhaps the most commonly found members of the intermediate filament gene family. They are expressed in single layer epithelial tissues of the body. Mutations in this gene have been linked to cryptogenic cirrhosis. Two transcript variants encoding the same protein have been found for this gene. [provided by RefSeq]

**Other Designations**

cell proliferation-inducing protein 46|cytokeratin 18

## Pathway

- [Pathogenic Escherichia coli infection - EHEC](#)

## Disease

- [Cleft Lip](#)
- [Cleft Palate](#)
- [Drug-Induced Liver Injury](#)
- [Genetic Predisposition to Disease](#)
- [Liver Cirrhosis](#)
- [Liver Failure](#)