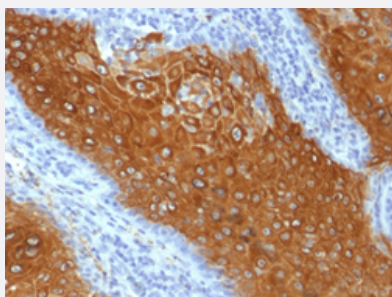


# KRT10 monoclonal antibody, clone KRT10/844

Catalog # MAB14325      Size 100 ug

## Applications



### Immunohistochemistry (Formalin/PFA-fixed paraffin-embedded sections)

Immunohistochemical staining (Formalin-fixed paraffin-embedded sections) of human skin with KRT10 monoclonal antibody, clone KRT10/844 (Cat # MAB14325).

## Specification

Product Description	Mouse monoclonal antibody raised against full length recombinant human KRT10.
Immunogen	Recombinant protein corresponding to full length human KRT10.
Host	Mouse
Theoretical MW (kDa)	56.5
Reactivity	Human
Form	Liquid
Purification	Protein A/G purification
Isotype	IgG1, kappa
Recommend Usage	Flow Cytometry (0.5-1 ug/10 <sup>6</sup> cells) Immunofluorescence (0.5-1 ug/mL) Immunohistochemistry (Formalin/PFA-fixed paraffin-embedded sections) (0.1-0.2 ug/mL) The optimal working dilution should be determined by the end user.
Storage Buffer	In 10 mM PBS (0.05% BSA, 0.05% sodium azide).

**Storage Instruction**

Store at 4°C.

**Note**

This product contains sodium azide: a POISONOUS AND HAZARDOUS SUBSTANCE which should be handled by trained staff only.

## Applications

- Immunohistochemistry (Formalin/PFA-fixed paraffin-embedded sections)

Immunohistochemical staining (Formalin-fixed paraffin-embedded sections) of human skin with KRT10 monoclonal antibody, clone KRT10/844 (Cat # MAB14325).

- Immunofluorescence

- Flow Cytometry

## Gene Info — KRT10

**Entrez GeneID**[3858](#)**Protein Accession#**[P13645](#)**Gene Name**

KRT10

**Gene Alias**

CK10, K10, KPP

**Gene Description**

keratin 10

**Omim ID**[113800](#) [148080](#) [600648](#) [607602](#)**Gene Ontology**[Hyperlink](#)**Gene Summary**

This gene encodes a member of the type I (acidic) cytokeratin family, which belongs to the superfamily of intermediate filament (IF) proteins. Keratins are heteropolymeric structural proteins which form the intermediate filament. These filaments, along with actin microfilaments and microtubules, compose the cytoskeleton of epithelial cells. Mutations in this gene are associated with epidermolytic hyperkeratosis. This gene is located within a cluster of keratin family members on chromosome 17q21. [provided by RefSeq]

**Other Designations**

cytokeratin 10