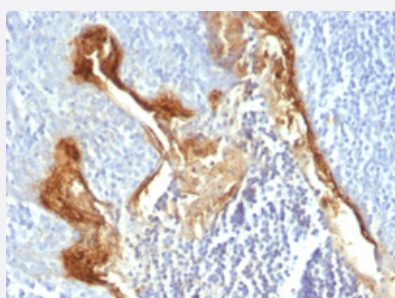


IVL monoclonal antibody, clone IVRN/827

Catalog # MAB14305 Size 100 ug

Applications



Immunohistochemistry (Formalin/PFA-fixed paraffin-embedded sections)

Immunohistochemical staining (Formalin-fixed paraffin-embedded sections) of human tonsil with IVL monoclonal antibody, clone IVRN/827 (Cat # MAB14305).

Specification

Product Description Mouse monoclonal antibody raised against native human IVL.

Immunogen Native purified IVL from human keratinocytes.

Host Mouse

Theoretical MW (kDa) 66-170

Reactivity Human

Form Liquid

Purification Protein A/G purification

Isotype IgG1, kappa

Recommend Usage
Flow Cytometry (0.5-1 ug/10⁶ cells in 0.1 mL)
Immunofluorescence (1-2 ug/mL)
Immunohistochemistry (Formalin/PFA-fixed paraffin-embedded sections) (0.1-0.2 ug/mL)
The optimal working dilution should be determined by the end user.

Storage Buffer In 10 mM PBS (0.05% BSA, 0.05% sodium azide).

Storage Instruction

Store at 4°C.

Note

This product contains sodium azide: a POISONOUS AND HAZARDOUS SUBSTANCE which should be handled by trained staff only.

Applications

- Immunohistochemistry (Formalin/PFA-fixed paraffin-embedded sections)

Immunohistochemical staining (Formalin-fixed paraffin-embedded sections) of human tonsil with IVL monoclonal antibody, clone IVRN/827 (Cat # MAB14305).

- Immunofluorescence
- Flow Cytometry

Gene Info — IVL

Entrez GeneID[3713](#)**Protein Accession#**[P07476](#)**Gene Name**

IVL

Gene Alias

-

Gene Description

involucrin

Omim ID[147360](#)**Gene Ontology**[Hyperlink](#)**Gene Summary**

Involucrin, a component of the keratinocyte crosslinked envelope, is found in the cytoplasm and crosslinked to membrane proteins by transglutaminase. This gene is mapped to 1q21, among calpactin I light chain, trichohyalin, profilaggrin, loricrin, and calcyclin. [provided by RefSeq]

Other Designations

OTTHUMP00000014402

Disease

- [Dermatitis](#)
- [Genetic Predisposition to Disease](#)