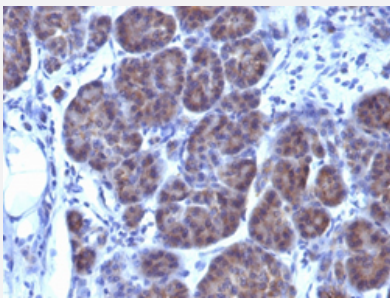


GLG1 monoclonal antibody, clone GLG1/970

Catalog # MAB14273 Size 100 ug

Applications



Immunohistochemistry (Formalin/PFA-fixed paraffin-embedded sections)

Immunohistochemical staining (Formalin-fixed paraffin-embedded sections) of human placenta with GLG1 monoclonal antibody, clone GLG1/970 (Cat # MAB14273).

Specification

Product Description	Mouse monoclonal antibody raised against native human GLG1.
Immunogen	Golgi fraction from human liver cells.
Host	Mouse
Theoretical MW (kDa)	134
Reactivity	Human
Form	Liquid
Purification	Protein A/G purification
Isotype	IgG1, kappa
Recommend Usage	<p>Flow Cytometry (0.5-1 ug/10⁶ cells in 0.1 mL)</p> <p>Immunofluorescence (0.5-1 ug/mL)</p> <p>Immunocytochemistry (0.5-1 ug/mL)</p> <p>Immunohistochemistry (Formalin/PFA-fixed paraffin-embedded sections) (0.5-1 ug/mL)</p> <p>Western Blot (0.5-1 ug/mL)</p> <p>The optimal working dilution should be determined by the end user.</p>

Storage Buffer	In 10 mM PBS (0.05% BSA, 0.05% sodium azide).
Storage Instruction	Store at 4°C.
Note	This product contains sodium azide: a POISONOUS AND HAZARDOUS SUBSTANCE which should be handled by trained staff only.

Applications

- Western Blot
- Immunohistochemistry (Formalin/PFA-fixed paraffin-embedded sections)

Immunohistochemical staining (Formalin-fixed paraffin-embedded sections) of human placenta with GLG1 monoclonal antibody, clone GLG1/970 (Cat # MAB14273).

- Immunocytochemistry
- Immunofluorescence
- Flow Cytometry

Gene Info — GLG1

Entrez GeneID	2734
Protein Accession#	Q92896
Gene Name	GLG1
Gene Alias	CFR-1, ESL-1, FLJ23319, FLJ23967, MG-160, MG160
Gene Description	golgi apparatus protein 1
Omim ID	600753
Gene Ontology	Hyperlink
Other Designations	cysteine-rich fibroblast growth factor receptor

Pathway

- [Cell adhesion molecules \(CAMs\)](#)

Disease

- [Breast Neoplasms](#)
- [Genetic Predisposition to Disease](#)