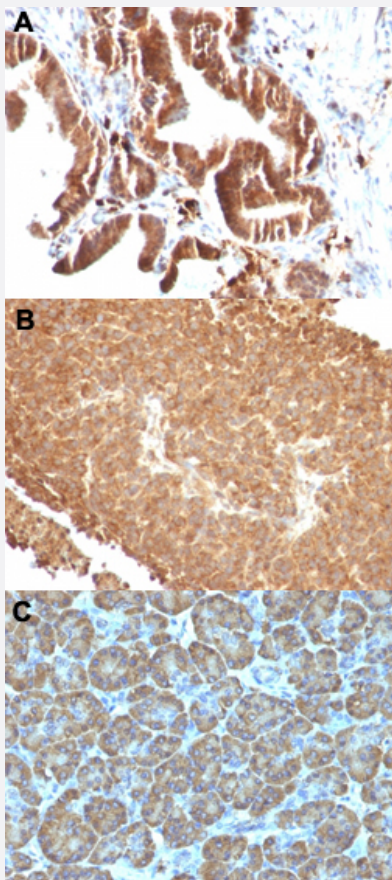


TOP1MT monoclonal antibody, clone TOP1MT/488

Catalog # MAB14239 Size 100 ug

Applications



Immunohistochemistry (Formalin/PFA-fixed paraffin-embedded sections)

Immunohistochemical staining (Formalin-fixed paraffin-embedded sections) of human gallbladder (A), human melanoma (B) and human pancreas (C) with TOP1MT monoclonal antibody, clone TOP1MT/488 (Cat # MAB14239).

Specification

Product Description	Mouse monoclonal antibody raised against full length recombinant human TOP1MT.
Immunogen	Recombinant protein corresponding to full length human TOP1MT.
Host	Mouse
Theoretical MW (kDa)	70

Reactivity	Human
Form	Liquid
Purification	Protein A/G purification
Isotype	IgG2b, kappa
Recommend Usage	Flow Cytometry (0.5-1 ug/10 ⁶ cells in 0.1 mL) Immunofluorescence (0.5-1 ug/mL) Immunohistochemistry (Formalin/PFA-fixed paraffin-embedded sections) (0.5-1 ug/mL) The optimal working dilution should be determined by the end user.
Storage Buffer	In 10 mM PBS (0.05% BSA, 0.05% sodium azide).
Storage Instruction	Store at 4°C.
Note	This product contains sodium azide: a POISONOUS AND HAZARDOUS SUBSTANCE which should be handled by trained staff only.

Applications

- Immunohistochemistry (Formalin/PFA-fixed paraffin-embedded sections)

Immunohistochemical staining (Formalin-fixed paraffin-embedded sections) of human gallbladder (A), human melanoma (B) and human pancreas (C) with TOP1MT monoclonal antibody, clone TOP1MT/488 (Cat # MAB14239).

- Immunofluorescence

- Flow Cytometry

Gene Info — TOP1MT

Entrez GeneID	116447
Protein Accession#	Q969P6
Gene Name	TOP1MT
Gene Alias	2900052H09Rik
Gene Description	topoisomerase (DNA) I, mitochondrial
Omim ID	606387
Gene Ontology	Hyperlink

Gene Summary

This gene encodes a mitochondrial DNA topoisomerase, an enzyme that controls and alters the topologic states of DNA during transcription. This enzyme catalyzes the transient breaking and rejoining of DNA which allows the strands to pass through one another and relieves the stress introduced by a circular mitochondrial genome during replication and transcription. [provided by RefSeq]

Other Designations

mitochondrial topoisomerase I

Disease

- [Adenocarcinoma](#)
- [Esophageal Neoplasms](#)