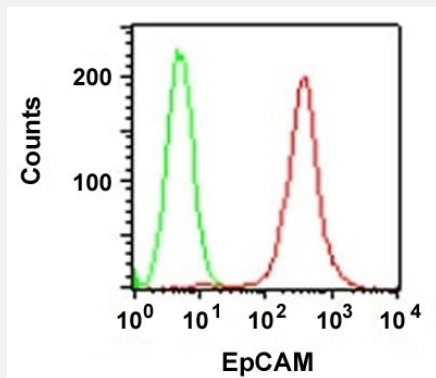


EPCAM monoclonal antibody, clone VU-1D9 (PE)

Catalog # MAB14211 Size 100 Reactions

Applications



Flow Cytometry

Flow cytometric analysis of HT-29 cell with EPCAM monoclonal antibody, clone VU-1D9 (PE) (Cat # MAB14211) (red). Green: isotype control.

Specification

Product Description Mouse monoclonal antibody raised against native human EPCAM.

Immunogen Small cell lung carcinoma cells.

Host Mouse

Theoretical MW (kDa) 40-43

Reactivity Human

Form Liquid

Conjugation PE

Purification Protein G purification

Isotype IgG1, kappa

Recommend Usage Flow Cytometry (5 uL/test/million cells in 0.1 mL or 5 uL/100 uL of whole blood)
Immunofluorescence (1:50-1:100)
The optimal working dilution should be determined by the end user.

Storage Buffer	In PBS (0.05% BSA, 0.05% sodium azide).
Storage Instruction	Store at 4°C.
Note	This product contains sodium azide: a POISONOUS AND HAZARDOUS SUBSTANCE which should be handled by trained staff only.

Applications

- Immunofluorescence
- Flow Cytometry

Flow cytometric analysis of HT-29 cell with EPCAM monoclonal antibody, clone VU-1D9 (PE) (Cat # MAB14211) (red). Green: isotype control.

Gene Info — EPCAM

Entrez GeneID	4072
Protein Accession#	P16422
Gene Name	EPCAM
Gene Alias	17-1A, 323/A3, CD326, CO-17A, CO17-1A, EGP, EGP-2, EGP34, EGP40, ESA, Ep-CAM, GA733-2, HEA125, KS1/4, KSA, M4S1, MH99, MIC18, MK-1, MOC31, TACST-1, TACSTD1, TROP1, hEGP-2
Gene Description	epithelial cell adhesion molecule
Omim ID	185535
Gene Ontology	Hyperlink
Gene Summary	This gene encodes a carcinoma-associated antigen and is a member of a family that includes at least two type I membrane proteins. This antigen is expressed on most normal epithelial cells and gastrointestinal carcinomas and functions as a homotypic calcium-independent cell adhesion molecule. The antigen is being used as a target for immunotherapy treatment of human carcinomas. Mutations in this gene result in congenital tufting enteropathy. [provided by RefSeq]
Other Designations	adenocarcinoma-associated antigen carcinoma-associated antigen GA733-2 human epithelial glycoprotein-2 membrane component, chromosome 4, surface marker (35kD glycoprotein) tumor-associated calcium signal transducer 1

Disease

- [Genetic Predisposition to Disease](#)
- [Ovarian Neoplasms](#)