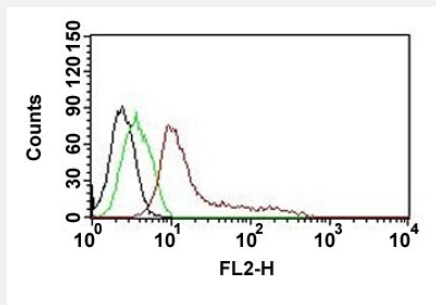


Human nuclei monoclonal antibody, clone 235-1 (PE)

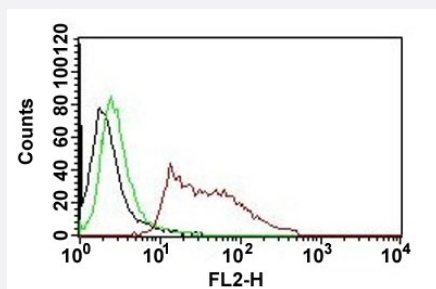
Catalog # MAB14206 Size 500 uL

Applications



Flow Cytometry

Flow cytometric analysis of MCF-7 cell with Human nuclei monoclonal antibody, clone 235-1 (PE) (Cat # MAB14206) (red). Black: cells alone. Green: isotype control.



Flow Cytometry

Flow cytometric analysis of HeLa cell with Human nuclei monoclonal antibody, clone 235-1 (PE) (Cat # MAB14206) (red). Black: cells alone. Green: isotype control.

Specification

Product Description	Mouse monoclonal antibody raised against nuclei in human cells.
Immunogen	Nuclei of human myeloid leukemia biopsy cells.
Host	Mouse
Theoretical MW (kDa)	70, 80
Reactivity	Human
Specificity	This antibody does not react with nuclei of mouse, rat and chicken.
Form	Liquid

Conjugation	PE
Purification	Protein G purification
Isotype	IgG1, kappa
Recommend Usage	Flow Cytometry (5 uL/test/million cells in 0.1 mL or 5 uL/100 uL of whole blood) Immunofluorescence (1:50-1:100) The optimal working dilution should be determined by the end user.
Storage Buffer	In PBS (0.05% BSA, 0.05% sodium azide).
Storage Instruction	Store at 4°C.
Note	This product contains sodium azide: a POISONOUS AND HAZARDOUS SUBSTANCE which should be handled by trained staff only.

Applications

- Immunofluorescence

- Flow Cytometry

Flow cytometric analysis of MCF-7 cell with Human nuclei monoclonal antibody, clone 235-1 (PE) (Cat # MAB14206) (red). Black: cells alone. Green: isotype control.

- Flow Cytometry

Flow cytometric analysis of HeLa cell with Human nuclei monoclonal antibody, clone 235-1 (PE) (Cat # MAB14206) (red). Black: cells alone. Green: isotype control.